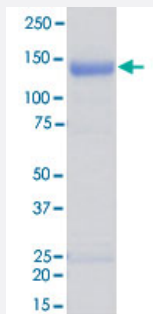


Bioactive

# MARK1 (Human) Recombinant Protein

Catalog # P5726      Size 5 ug

## Applications



## Result of activity analysis

Result of activity analysis

## Specification

<b>Product Description</b>	Human MARK1 (AAF72103.1, 1 a.a. - 947 a.a.) partial recombinant protein with GST tag expressed in Baculovirus infected Sf21 cells.
<b>Host</b>	insect
<b>Theoretical MW (kDa)</b>	116
<b>Form</b>	Liquid
<b>Preparation Method</b>	Baculovirus infected insect cell (Sf21) expression system
<b>Purification</b>	Glutathione sepharose chromatography
<b>Purity</b>	87 % by SDS-PAGE/CBB staining.

<b>Activity</b>	The activity was measured by off-chip mobility shift assay. The enzyme was incubated with fluorescence-labeled substrate and Mg (or Mn)/ATP. The phosphorylated and unphosphorylated substrates were separated and detected by LabChip™3000. Substrate : CHKtide. ATP: 100 μM.
<b>Quality Control Testing</b>	Loading 1 ug protein in SDS-PAGE
<b>Storage Buffer</b>	In 50 mM Tris-HCl, 150 mM NaCl, pH 7.5 (0.05% Brij35, 1 mM DTT, 10% glycerol)
<b>Storage Instruction</b>	Store at -80°C. Aliquot to avoid repeated freezing and thawing.
<b>Note</b>	Result of activity analysis Result of activity analysis

## Applications

- Functional Study
- SDS-PAGE

## Gene Info — MARK1

<b>Entrez GeneID</b>	<a href="#">4139</a>
<b>Protein Accession#</b>	<a href="#">AAF72103.1</a>
<b>Gene Name</b>	MARK1
<b>Gene Alias</b>	KIAA1477, MARK, MGC126512, MGC126513
<b>Gene Description</b>	MAP/microtubule affinity-regulating kinase 1
<b>Omim ID</b>	<a href="#">606511</a>
<b>Gene Ontology</b>	<a href="#">Hyperlink</a>
<b>Other Designations</b>	OTTHUMP00000035458

## Disease

- [Autistic Disorder](#)
- [Genetic Predisposition to Disease](#)

- [Tobacco Use Disorder](#)