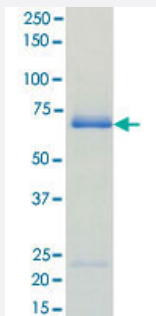


Bioactive

EPHA4 (Human) Recombinant Protein

Catalog # P5705 Size 5 ug

Applications



Result of activity analysis

Result of activity analysis

Specification

Product Description	Human EPHA4 (NP_004430.3, 586 a.a. - 986 a.a.) partial recombinant protein with GST tag expressed in Baculovirus infected Sf21 cells.
Host	insect
Theoretical MW (kDa)	72
Form	Liquid
Preparation Method	Baculovirus infected insect cell (Sf21) expression system
Purification	Glutathione sepharose chromatography
Purity	89 % by SDS-PAGE/CBB staining.

Activity	The activity was measured by off-chip mobility shift assay. The enzyme was incubated with fluorescence-labeled substrate and Mg (or Mn)/ATP. The phosphorylated and unphosphorylated substrates were separated and detected by LabChip™3000. Substrate : Blk/Lyntide. ATP: 100 µM.
Quality Control Testing	Loading 1 ug protein in SDS-PAGE
Storage Buffer	In 50 mM Tris-HCl, 150 mM NaCl, pH 7.5 (0.05% Brij35, 1 mM DTT, 10% glycerol)
Storage Instruction	Store at -80°C. Aliquot to avoid repeated freezing and thawing.
Note	Result of activity analysis Result of activity analysis

Applications

- Functional Study
- SDS-PAGE

Gene Info — EPHA4

Entrez GeneID	2043
Protein Accession#	NP_004429.1
Gene Name	EPHA4
Gene Alias	HEK8, SEK, TYRO1
Gene Description	EPH receptor A4
Omim ID	602188
Gene Ontology	Hyperlink
Gene Summary	This gene belongs to the ephrin receptor subfamily of the protein-tyrosine kinase family. EPH and EPH-related receptors have been implicated in mediating developmental events, particularly in the nervous system. Receptors in the EPH subfamily typically have a single kinase domain and an extracellular region containing a Cys-rich domain and 2 fibronectin type III repeats. The ephrin receptors are divided into 2 groups based on the similarity of their extracellular domain sequences and their affinities for binding ephrin-A and ephrin-B ligands. [provided by RefSeq]
Other Designations	OTTHUMP00000164185 TYRO1 protein tyrosine kinase ephrin receptor EphA4 ephrin type-A receptor 4 receptor protein-tyrosine kinase HEK8 tyrosine-protein kinase receptor SEK

Pathway

- [Axon guidance](#)

Disease

- [Alzheimer Disease](#)
- [Cognition Disorders](#)
- [Genetic Predisposition to Disease](#)
- [Parkinson disease](#)