

Bioactive

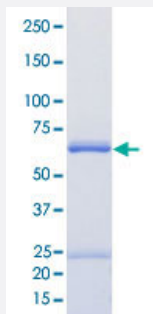
Full-Length

# CAMK1 (Human) Recombinant Protein

Catalog # P5690

Size 5 ug

## Applications



## Result of activity analysis

Result of activity analysis

□

## Specification

<b>Product Description</b>	Human CAMK1 (NM_003656, 1 a.a. - 370 a.a.) full-length recombinant protein with GST tag expressed in Baculovirus infected Sf21 cells.
<b>Host</b>	insect
<b>Theoretical MW (kDa)</b>	68
<b>Form</b>	Liquid
<b>Preparation Method</b>	Baculovirus expression system
<b>Purification</b>	Glutathione sepharose chromatography
<b>Purity</b>	79 % by SDS-PAGE/CBB staining.

<b>Activity</b>	The activity was measured by off-chip mobility shift assay. The enzyme was incubated with fluorescence-labeled substrate, Mg (or Mn)/ATP, and Ca/Calmodulin. The phosphorylated and unphosphorylated substrates were separated and detected by LabChip™3000. Substrate : GS peptide. ATP: 100 μM.
<b>Quality Control Testing</b>	Loading 1 ug protein in SDS-PAGE
<b>Storage Buffer</b>	In 50 mM Tris-HCl, 150 mM NaCl, pH 7.5 (0.05% Brij35, 1 mM DTT, 10% glycerol)
<b>Storage Instruction</b>	Store at -80°C. Aliquot to avoid repeated freezing and thawing.
<b>Note</b>	Result of activity analysis Result of activity analysis

## Applications

- Functional Study
- SDS-PAGE

## Gene Info — CAMK1

<b>Entrez GeneID</b>	<a href="#">8536</a>
<b>Protein Accession#</b>	<a href="#">NM_003656</a>
<b>Gene Name</b>	CAMK1
<b>Gene Alias</b>	CAMKI, MGC120317, MGC120318
<b>Gene Description</b>	calcium/calmodulin-dependent protein kinase I
<b>Omim ID</b>	<a href="#">604998</a>
<b>Gene Ontology</b>	<a href="#">Hyperlink</a>
<b>Gene Summary</b>	Calcium/calmodulin-dependent protein kinase I is expressed in many tissues and is a component of a calmodulin-dependent protein kinase cascade. Calcium/calmodulin directly activates calcium/calmodulin-dependent protein kinase I by binding to the enzyme and indirectly promotes the phosphorylation and synergistic activation of the enzyme by calcium/calmodulin-dependent protein kinase I kinase. [provided by RefSeq]
<b>Other Designations</b>	OTTHUMP00000158527

## Disease

- [Anorexia Nervosa](#)
- [Bulimia](#)
- [Cardiovascular Diseases](#)
- [Diabetes Mellitus](#)
- [Edema](#)
- [Genetic Predisposition to Disease](#)
- [Kidney Failure](#)
- [Mental Disorders](#)