

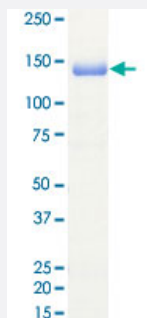
Bioactive

Full-Length

TLK1 (Human) Recombinant Protein

Catalog # P5651 Size 5 ug

Applications



Result of activity analysis

Result of activity analysis

□

Specification

Product Description	Human TLK1 (NP_036422.3, 1 a.a. - 766 a.a.) full-length recombinant protein with GST tag expressed in baculovirus infected Sf21 cells.
Host	insect
Theoretical MW (kDa)	113
Form	Liquid
Preparation Method	Baculovirus infected insect cell (Sf21) expression system
Purification	Glutathione sepharose chromatography
Purity	99 % by SDS-PAGE/CBB staining

Activity	The activity was measured by off-chip mobility shift assay. The enzyme was incubated with fluorescence-labeled substrate and Mg(or Mn)/ATP. The phosphorylated and unphosphorylated substrates were separated and detected by LabChip 3000. Substrate: Histone H3 peptide. ATP: 100 uM.
Quality Control Testing	Loading 1 ug protein in SDS-PAGE
Storage Buffer	In 50 mM Tris-HCl, 150 mM NaCl, pH 7.5 (0.05% Brij35, 1 mM DTT, 10% glycerol)
Storage Instruction	Store at -80°C. Aliquot to avoid repeated freezing and thawing.
Note	Result of activity analysis Result of activity analysis

Applications

- Functional Study
- SDS-PAGE

Gene Info — TLK1

Entrez GeneID	9874
Protein Accession#	NP_036422.3
Gene Name	TLK1
Gene Alias	KIAA0137, PKU-beta
Gene Description	tousled-like kinase 1
Omim ID	608438
Gene Ontology	Hyperlink
Gene Summary	The Tousled-like kinases, first described in Arabidopsis, are nuclear serine/threonine kinases that are potentially involved in the regulation of chromatin assembly.[supplied by OMIM]
Other Designations	SNARE protein kinase SNAK serine threonine protein kinase