

Bioactive

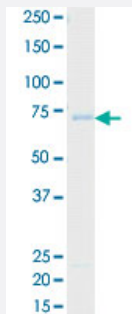
Full-Length

# PHKG2 (Human) Recombinant Protein

Catalog # P5622

Size 5 ug

## Applications



## Result of activity analysis

Result of activity analysis

□

## Specification

<b>Product Description</b>	Human PHKG2 (NP_000285.1, 1 a.a. - 406 a.a.) full-length recombinant protein with GST tag expressed in baculovirus infected Sf21 cells.
<b>Host</b>	insect
<b>Theoretical MW (kDa)</b>	74
<b>Form</b>	Liquid
<b>Preparation Method</b>	Baculovirus infected insect cell (Sf21) expression system
<b>Purification</b>	Glutathione sepharose chromatography
<b>Purity</b>	76 % by SDS-PAGE/CBB staining

Activity	The activity was measured by off-chip mobility shift assay. The enzyme was incubated with fluorescence-labeled substrate and Mg(or Mn)/ATP. The phosphorylated and unphosphorylated substrates were separated and detected by LabChip 3000. Substrate: GS peptide. ATP: 100 $\mu$ M.
Quality Control Testing	Loading 1 $\mu$ g protein in SDS-PAGE
Storage Buffer	In 50 mM Tris-HCl, 150 mM NaCl, pH 7.5 (0.05% Brij35, 1 mM DTT, 10% glycerol)
Storage Instruction	Store at -80°C. Aliquot to avoid repeated freezing and thawing.
Note	Result of activity analysis Result of activity analysis

## Applications

- Functional Study
- SDS-PAGE

## Gene Info — PHKG2

Entrez GeneID	<a href="#">5261</a>
Protein Accession#	<a href="#">NP_000285.1</a>
Gene Name	PHKG2
Gene Alias	GSD9C
Gene Description	phosphorylase kinase, gamma 2 (testis)
Omim ID	<a href="#">172471</a>
Gene Ontology	<a href="#">Hyperlink</a>
Gene Summary	O
Other Designations	Phosphorylase kinase, gamma 2 (testis/liver)

## Pathway

- [Calcium signaling pathway](#)

- [Insulin signaling pathway](#)