

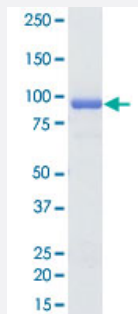
Bioactive

## CDC42BPA (Human) Recombinant Protein

Catalog # P5603

Size 5 ug

### Applications



### Result of activity analysis

Result of activity analysis

□

### Specification

<b>Product Description</b>	Human CDC42BPA (NP_003598.2, 1 a.a. - 574 a.a.) partial recombinant protein with GST tag expressed in baculovirus infected Sf21 cells.
<b>Host</b>	insect
<b>Theoretical MW (kDa)</b>	93
<b>Form</b>	Liquid
<b>Preparation Method</b>	Baculovirus infected insect cell (Sf21) expression system
<b>Purification</b>	Glutathione sepharose chromatography
<b>Purity</b>	97 % by SDS-PAGE/CBB staining

Activity	The activity was measured by off-chip mobility shift assay. The enzyme was incubated with fluorescence-labeled substrate and Mg(or Mn)/ATP. The phosphorylated and unphosphorylated substrates were separated and detected by LabChip 3000. Substrate:DAPK1tide. ATP: 100 uM.
Quality Control Testing	Loading 1 ug protein in SDS-PAGE
Storage Buffer	In 50 mM Tris-HCl, 150 mM NaCl, pH 7.5 (0.05% Brij35, 1 mM DTT, 10% glycerol)
Storage Instruction	Store at -80°C. Aliquot to avoid repeated freezing and thawing.
Note	Result of activity analysis Result of activity analysis

## Applications

- Functional Study
- SDS-PAGE

## Gene Info — CDC42BPA

Entrez GeneID	<a href="#">8476</a>
Protein Accession#	<a href="#">NP_003598.2</a>
Gene Name	CDC42BPA
Gene Alias	DKFZp686L1738, DKFZp686P1738, FLJ23347, KIAA0451, MRCK, MRCKA, PK428
Gene Description	CDC42 binding protein kinase alpha (DMPK-like)
Omim ID	<a href="#">603412</a>
Gene Ontology	<a href="#">Hyperlink</a>
Gene Summary	The protein encoded by this gene is a member of the Serine/Threonine protein kinase family. This kinase contains multiple functional domains. Its kinase domain is highly similar to that of the myotonic dystrophy protein kinase (DMPK). This kinase also contains a Rac interactive binding (CRIB) domain, and has been shown to bind CDC42. It may function as a CDC42 downstream effector mediating CDC42 induced peripheral actin formation, and promoting cytoskeletal reorganization. Multiple alternatively spliced transcript variants have been described, and the full-length nature of two of them has been reported. [provided by RefSeq]

**Other Designations**

CDC42 binidng protein kinase beta|CDC42-binding protein kinase alpha|CDC42-binding protein kinase alpha (DMPK-like)|OTTHUMP00000035727|OTTHUMP00000035728|myotonic dystrophy kinase-related CDC42-binding protein kinase alpha|ser-thr protein kinase PK428|ser

**Disease**

- [Kidney Failure](#)