

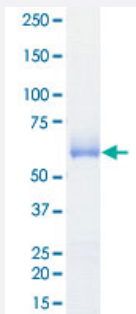
Bioactive

# MAP3K9 (Human) Recombinant Protein

Catalog # P5598

Size 5 ug

## Applications



## Result of activity analysis

Result of activity analysis

□

## Specification

<b>Product Description</b>	Human MAP3K9 (NP_149132.2, 110 a.a. - 422 a.a.) partial recombinant protein with GST tag expressed in baculovirus infected Sf21 cells.
<b>Host</b>	insect
<b>Theoretical MW (kDa)</b>	62
<b>Form</b>	Liquid
<b>Preparation Method</b>	Baculovirus infected insect cell (Sf21) expression system
<b>Purification</b>	Glutathione sepharose chromatography
<b>Purity</b>	96 % by SDS-PAGE/CBB staining

Activity	The activity was determined by ELISA. The enzyme was incubated with GST-fused substrate protein, and after stopping kinase reaction by EDTA, the reaction solution was transferred into glutathione-coated plate. Phosphorylation was detected by anti-phospho antibody and HRP-labeled anti-rabbit IgG. Substrate: MAP2K7 [inactive mutant]. ATP: 100 uM.
Quality Control Testing	Loading 1 ug protein in SDS-PAGE
Storage Buffer	In 50 mM Tris-HCl, 150 mM NaCl, pH 7.5 (0.05% Brij35, 1 mM DTT, 10% glycerol)
Storage Instruction	Store at -80°C. Aliquot to avoid repeated freezing and thawing.
Note	Result of activity analysis Result of activity analysis

## Applications

- Functional Study
- SDS-PAGE

## Gene Info — MAP3K9

Entrez GeneID	<a href="#">4293</a>
Protein Accession#	<a href="#">NP_149132.2</a>
Gene Name	MAP3K9
Gene Alias	MLK1, PRKE1
Gene Description	mitogen-activated protein kinase kinase kinase 9
Omim ID	<a href="#">600136</a>
Gene Ontology	<a href="#">Hyperlink</a>
Other Designations	mixed lineage kinase 1 (tyr and ser/thr specificity)

## Pathway

- [MAPK signaling pathway](#)

## Disease

- [Tobacco Use Disorder](#)