

Bioactive

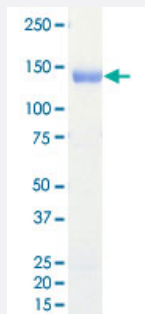
Full-Length

MAP4K2 (Human) Recombinant Protein

Catalog # P5593

Size 5 ug

Applications



Result of activity analysis

Result of activity analysis

Specification

Product Description	Human MAP4K2 (NP_004570.2, 1 a.a. - 820 a.a.) full-length recombinant protein with GST tag expressed in baculovirus infected Sf21 cells.
Host	insect
Theoretical MW (kDa)	119
Form	Liquid
Preparation Method	Baculovirus infected insect cell (Sf21) expression system
Purification	Glutathione sepharose chromatography
Purity	92 % by SDS-PAGE/CBB staining

Activity	The activity was measured by off-chip mobility shift assay. The enzyme was incubated with fluorescence-labeled substrate and Mg(or Mn)/ATP. The phosphorylated and unphosphorylated substrates were separated and detected by LabChip 3000. Substrate: S6K2 peptide. ATP: 100 uM.
Quality Control Testing	Loading 1 ug protein in SDS-PAGE
Storage Buffer	In 50 mM Tris-HCl, 150 mM NaCl, pH 7.5 (0.05% Brij35, 1 mM DTT, 10% glycerol)
Storage Instruction	Store at -80°C. Aliquot to avoid repeated freezing and thawing.
Note	Result of activity analysis Result of activity analysis

Applications

- Functional Study
- SDS-PAGE

Gene Info — MAP4K2

Entrez GeneID	5871
Protein Accession#	NP_004570.2
Gene Name	MAP4K2
Gene Alias	BL44, GCK, RAB8IP
Gene Description	mitogen-activated protein kinase kinase kinase kinase 2
Omim ID	603166
Gene Ontology	Hyperlink
Gene Summary	The protein encoded by this gene is a member of the serine/threonine protein kinase family. Although this kinase is found in many tissues, its expression in lymphoid follicles is restricted to the cells of germinal centre, where it may participate in B-cell differentiation. This kinase can be activated by TNF-alpha, and has been shown to specifically activate MAP kinases. This kinase is also found to interact with TNF receptor-associated factor 2 (TRAF2), which is involved in the activation of MAP3K1/MEKK1. [provided by RefSeq]
Other Designations	B lymphocyte serine/threonine protein kinase Rab8 interacting protein germinal centre kinase (G C kinase)

Pathway

- [MAPK signaling pathway](#)

Disease

- [Cardiovascular Diseases](#)
- [Diabetes Mellitus](#)
- [Edema](#)