

Bioactive

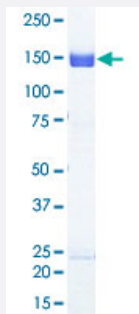
Full-Length

# STK10 (Human) Recombinant Protein

Catalog # P5578

Size 5 ug

## Applications



## Result of activity analysis

Result of activity analysis

□

## Specification

<b>Product Description</b>	Human STK10 (BAA35073.1, 1 a.a. - 968 a.a.) full-length recombinant protein expressed in baculovirus infected Sf21 cells.
<b>Host</b>	insect
<b>Theoretical MW (kDa)</b>	113
<b>Form</b>	Liquid
<b>Preparation Method</b>	Baculovirus infected insect cell (Sf21) expression system
<b>Purification</b>	Glutathione sepharose chromatography
<b>Purity</b>	90 % by SDS-PAGE/CBB staining

Activity	The activity was measured by off-chip mobility shift assay. The enzyme was incubated with fluorescence-labeled substrate and Mg(or Mn)/ATP. The phosphorylated and unphosphorylated substrates were separated and detected by LabChip 3000. Substrate: Moesin-derived peptide. ATP: 100 uM.
Quality Control Testing	Loading 1 ug protein in SDS-PAGE
Storage Buffer	In 50 mM Tris-HCl, 150 mM NaCl, pH 7.5 (0.1% CHAPS, 1 mM DTT, 10% glycerol)
Storage Instruction	Store at -80°C. Aliquot to avoid repeated freezing and thawing.
Note	Result of activity analysis Result of activity analysis

## Applications

- Functional Study
- SDS-PAGE

## Gene Info — STK10

Entrez GeneID	<a href="#">6793</a>
Protein Accession#	<a href="#">BAA35073.1</a>
Gene Name	STK10
Gene Alias	LOK, PRO2729
Gene Description	serine/threonine kinase 10
Omim ID	<a href="#">603919</a>
Gene Ontology	<a href="#">Hyperlink</a>
Gene Summary	This gene encodes a member of the Ste20 family of serine/threonine protein kinases, and is similar to several known polo-like kinase kinases. The protein can associate with and phosphorylate polo-like kinase 1, and overexpression of a kinase-dead version of the protein interferes with normal cell cycle progression. The kinase can also negatively regulate interleukin 2 expression in T-cells via the mitogen activated protein kinase kinase 1 pathway. [provided by RefSeq]
Other Designations	lymphocyte-oriented kinase

## Disease

- [Tobacco Use Disorder](#)