

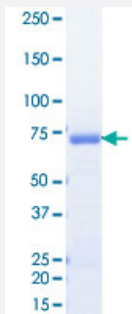
Bioactive

EPHA6 (Human) Recombinant Protein

Catalog # P5546

Size 5 ug

Applications



Result of activity analysis

Result of activity analysis

□

Specification

Product Description	Human EPHA6 (CAD38242.1, 683 a.a. - 1130 a.a.) partial recombinant protein with GST tag expressed in baculovirus infected Sf21 cells.
Host	insect
Theoretical MW (kDa)	77
Form	Liquid
Preparation Method	Baculovirus infected insect cell (Sf21) expression system
Purification	Glutathione sepharose chromatography
Purity	84 % by SDS-PAGE/CBB staining

Activity	The activity was measured by off-chip mobility shift assay. The enzyme was incubated with fluorescence-labeled substrate and Mg(or Mn)/ATP. The phosphorylated and unphosphorylated substrates were separated and detected by LabChip 3000. Substrate: Blk/Lyntide. ATP: 100 uM.
Quality Control Testing	Loading 1 ug protein in SDS-PAGE
Storage Buffer	In 50 mM Tris-HCl, 150 mM NaCl, pH 7.5 (0.1% CHAPS, 1 mM DTT, 10% glycerol)
Storage Instruction	Store at -80°C. Aliquot to avoid repeated freezing and thawing.
Note	Result of activity analysis Result of activity analysis

Applications

- Functional Study
- SDS-PAGE

Gene Info — EPHA6

Entrez GeneID	285220
Protein Accession#	CAD38242.1
Gene Name	EPHA6
Gene Alias	DKFZp434C1418, EPA6, FLJ35246, PRO57066
Gene Description	EPH receptor A6
Gene Ontology	Hyperlink
Other Designations	ephrin receptor EphA6

Pathway

- [Axon guidance](#)

Disease

- [Genetic Predisposition to Disease](#)
- [Obesity](#)
- [Psychiatric Status Rating Scales](#)
- [Schizophrenia](#)
- [Tobacco Use Disorder](#)