

Bioactive

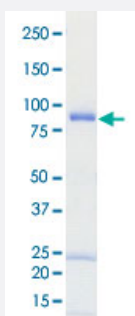
Full-Length

CLK2 (Human) Recombinant Protein

Catalog # P5528

Size 5 ug

Applications



Result of activity analysis

Result of activity analysis

□

Specification

Product Description	Human CLK2 (AAH53603.1, 1 a.a. - 499 a.a.) full-length recombinant protein with GST tag expressed in baculovirus infected Sf21 cells.
Host	insect
Theoretical MW (kDa)	87
Form	Liquid
Preparation Method	Baculovirus infected insect cell (Sf21) expression system
Purification	Glutathione sepharose chromatography
Purity	69 % by SDS-PAGE/CBB staining

Activity	The activity was measured by off-chip mobility shift assay. The enzyme was incubated with fluorescence-labeled substrate and Mg(or Mn)/ATP. The phosphorylated and unphosphorylated substrates were separated and detected by LabChip 3000. Substrate: DYRKtide-F. ATP: 100 uM.
Quality Control Testing	Loading 1 ug protein in SDS-PAGE
Storage Buffer	In 50 mM Tris-HCl, 150 mM NaCl, pH 7.5 (0.1% CHAPS, 1 mM DTT, 10% glycerol)
Storage Instruction	Store at -80°C. Aliquot to avoid repeated freezing and thawing.
Note	Result of activity analysis Result of activity analysis

Applications

- Functional Study
- SDS-PAGE

Gene Info — CLK2

Entrez GeneID	1196
Protein Accession#	AAH53603.1
Gene Name	CLK2
Gene Alias	MGC61500, hCLK2
Gene Description	CDC-like kinase 2
Omim ID	602989
Gene Ontology	Hyperlink
Gene Summary	This gene encodes a member of the CLK family of dual specificity protein kinases. CLK family members have been shown to interact with, and phosphorylate, serine- and arginine-rich (SR) proteins of the spliceosomal complex, which is a part of the regulatory mechanism that enables the SR proteins to control RNA splicing. Note that this gene is distinct from TELO2 gene (GeneID:9894), which shares CLK2 and hCLK2 symbol aliases in common with this gene, but encodes a protein that is involved in telomere length regulation. [provided by RefSeq]
Other Designations	CLK kinase dual specificity protein kinase CLK2