

Bioactive

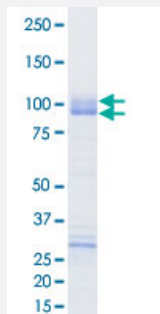
Full-Length

CDC7/DBF4 (Human) Recombinant Protein

Catalog # P5510

Size 5 ug

Applications



Result of activity analysis

Result of activity analysis

□

Specification

Product Description	Human CDC7 (NP_003494.1, 1 a.a. - 574 a.a.) and DBF4 (NP_006707.1, 1 a.a. - 674 a.a.) full-length recombinant protein with GST tag expressed in baculovirus infected Sf21 cells.
Host	insect
Theoretical MW (kDa)	92
Form	Liquid
Preparation Method	Baculovirus infected insect cell (Sf21) expression system
Purification	Glutathione sepharose chromatography
Purity	60 % by SDS-PAGE/CBB staining

Activity	The activity was measured by off-chip mobility shift assay. The enzyme was incubated with fluorescence-labeled substrate and Mg(or Mn)/ATP. The phosphorylated and unphosphorylated substrates were separated and detected by LabChip 3000. Substrate: MCM2 peptide. ATP: 100 uM.
Quality Control Testing	Loading 1 ug protein in SDS-PAGE
Storage Buffer	In 50 mM Tris-HCl, 150 mM NaCl, pH 7.5 (0.1% CHAPS, 1 mM DTT, 10% glycerol)
Storage Instruction	Store at -80°C. Aliquot to avoid repeated freezing and thawing.
Note	Result of activity analysis Result of activity analysis

Applications

- Functional Study
- SDS-PAGE

Gene Info — CDC7

Entrez GeneID	8317
Protein Accession#	NP_003494.1 (Gene ID : 8317);NP_006707.1 (Gene ID : 10926)
Gene Name	CDC7
Gene Alias	CDC7L1, HsCDC7, Hsk1, MGC117361, MGC126237, MGC126238, huCDC7
Gene Description	cell division cycle 7 homolog (S. cerevisiae)
Omim ID	603311
Gene Ontology	Hyperlink
Gene Summary	This gene encodes a cell division cycle protein with kinase activity that is critical for the G1/S transition. The yeast homolog is also essential for initiation of DNA replication as cell division occurs. Overexpression of this gene product may be associated with neoplastic transformation for some tumors. Multiple alternatively spliced transcript variants that encode the same protein have been detected. [provided by RefSeq]
Other Designations	CDC7 (cell division cycle 7, S. cerevisiae, homolog)-like 1 OTTHUMP00000011788 cell division cycle 7 cell division cycle 7-like protein 1

Gene Info — DBF4

Entrez GeneID	10926
Protein Accession#	NP_003494.1 (Gene ID : 8317);NP_006707.1 (Gene ID : 10926)
Gene Name	DBF4
Gene Alias	ASK, CHIF, DBF4A, ZDBF1
Gene Description	DBF4 homolog (S. cerevisiae)
Omim ID	604281
Gene Ontology	Hyperlink
Gene Summary	DBF-type containing 1
Other Designations	OTTHUMP00000161661 activator of S phase kinase chiffon homolog zinc finger, DBF-type containing 1

Pathway

- [Cell cycle](#)
- [Cell cycle](#)

Disease

- [Head and Neck Neoplasms](#)
- [Kidney Failure](#)
- [Neoplasm Recurrence](#)
- [Neoplasms](#)