

Bioactive

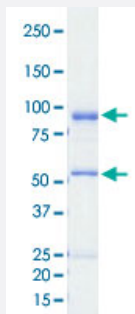
Full-Length

# CDC2L6/CCNC (Human) Recombinant Protein

Catalog # P5509

Size 5 ug

## Applications



## Result of activity analysis

Result of activity analysis

□

## Specification

<b>Product Description</b>	Human CDC2L6 (NP_055891.1, 1 a.a. - 502 a.a.) and CCNC (NP_005181.2, 1 a.a. - 283 a.a.) full-length recombinant protein with GST tag expressed in baculovirus infected Sf21 cells.
<b>Host</b>	insect
<b>Theoretical MW (kDa)</b>	85
<b>Form</b>	Liquid
<b>Preparation Method</b>	Baculovirus infected insect cell (Sf21) expression system
<b>Purification</b>	Glutathione sepharose chromatography
<b>Purity</b>	92 % by SDS-PAGE/CBB staining

<b>Activity</b>	The activity was determined by ELISA. The enzyme was incubated with biotinylated substrate protein , and after stopping kinase reaction by EDTA, the reaction solution was transferred into streptavidin-coated plate. Phosphorylation was detected by anti-phospho antibody and HRP-labeled anti-rabbit Ig G. Substrate: RNA polymerase peptide. ATP: 150 uM
<b>Quality Control Testing</b>	Loading 1 ug protein in SDS-PAGE
<b>Storage Buffer</b>	In 50 mM Tris-HCl, 150 mM NaCl, pH 7.5 (0.1% CHAPS, 1 mM DTT, 10% glycerol)
<b>Storage Instruction</b>	Store at -80°C. Aliquot to avoid repeated freezing and thawing.
<b>Note</b>	Result of activity analysis Result of activity analysis

## Applications

- Functional Study
- SDS-PAGE

## Gene Info — CCNC

<b>Entrez GeneID</b>	<a href="#">892</a>
<b>Protein Accession#</b>	<a href="#">NP_055891.1 (Gene ID : 23097);NP_005181.2 (Gene ID : 892)</a>
<b>Gene Name</b>	CCNC
<b>Gene Alias</b>	CycC
<b>Gene Description</b>	cyclin C
<b>Omim ID</b>	<a href="#">123838</a>
<b>Gene Ontology</b>	<a href="#">Hyperlink</a>
<b>Gene Summary</b>	The protein encoded by this gene is a member of the cyclin family of proteins. The encoded protein interacts with cyclin-dependent kinase 8 and induces the phosphorylation of the carboxy-terminal domain of the large subunit of RNA polymerase II. The level of mRNAs for this gene peaks in the G1 phase of the cell cycle. Two transcript variants encoding different isoforms have been found for this gene. [provided by RefSeq]
<b>Other Designations</b>	OTTHUMP00000016897

## Gene Info — CDC2L6

**Entrez GeneID** [23097](#)**Protein Accession#** [NP\\_055891.1 \(Gene ID : 23097\);NP\\_005181.2 \(Gene ID : 892\)](#)**Gene Name** CDC2L6**Gene Alias** CDK11, KIAA1028, bA346C16.3**Gene Description** cell division cycle 2-like 6 (CDK8-like)**Gene Ontology** [Hyperlink](#)

**Gene Summary** This gene encodes a protein that is one of the components of the Mediator coactivator complex. The Mediator complex is a multiprotein complex required for transcriptional activation by DNA binding transcription factors of genes transcribed by RNA polymerase II. The protein encoded by this gene is similar to cyclin-dependent kinase 8 which can also be a component of the Mediator complex. [provided by RefSeq]

**Other Designations** CDK8-like cyclin-dependent kinase|OTTHUMP00000017005|OTTHUMP00000040460|cyclin-dependent kinase (CDC2-like) 11|death-preventing kinase

## Disease

- [Tobacco Use Disorder](#)