

Bioactive

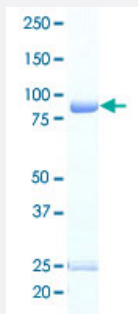
Full-Length

# CAMKK1 (Human) Recombinant Protein

Catalog # P5507

Size 5 ug

## Applications



## Result of activity analysis

Result of activity analysis

□

## Specification

<b>Product Description</b>	Human CAMKK1 (NP_115670.1, 1 a.a. - 505 a.a.) full-length recombinant protein with GST tag expressed in baculovirus infected Sf21 cells.
<b>Host</b>	insect
<b>Theoretical MW (kDa)</b>	82
<b>Form</b>	Liquid
<b>Preparation Method</b>	Baculovirus infected insect cell (Sf21) expression system
<b>Purification</b>	Glutathione sepharose chromatography
<b>Purity</b>	72 % by SDS-PAGE/CBB staining

Activity	The activity was measured by off-chip mobility shift assay. The enzyme was incubated with fluorescence-labeled substrate, Mg(or Mn)/ATP, and Ca/Calmodulin. The phosphorylated and unphosphorylated substrates were separated and detected by LabChip 3000. Substrate: CAMKK substrate. ATP: 500 uM
Quality Control Testing	Loading 1 ug protein in SDS-PAGE
Storage Buffer	In 50 mM Tris-HCl, 150 mM NaCl, pH 7.5 (0.1% CHAPS, 1 mM DTT, 10% glycerol)
Storage Instruction	Store at -80°C. Aliquot to avoid repeated freezing and thawing.
Note	Result of activity analysis Result of activity analysis

## Applications

- Functional Study
- SDS-PAGE

## Gene Info — CAMKK1

Entrez GeneID	<a href="#">84254</a>
Protein Accession#	<a href="#">NP_115670.1</a>
Gene Name	CAMKK1
Gene Alias	CAMKKA, DKFZp761M0423, MGC34095
Gene Description	calcium/calmodulin-dependent protein kinase kinase 1, alpha
Omim ID	<a href="#">611411</a>
Gene Ontology	<a href="#">Hyperlink</a>
Gene Summary	The product of this gene belongs to the Serine/Threonine protein kinase family, and to the Ca(2+)/calmodulin-dependent protein kinase subfamily. This protein plays a role in the calcium/calmodulin-dependent (CaM) kinase cascade. Three transcript variants encoding two distinct isoforms have been identified for this gene. [provided by RefSeq]
Other Designations	CAMKK alpha protein OTTHUMP00000115904 calcium/calmodulin-dependent protein kinase 1 alpha

## Pathway

- [Adipocytokine signaling pathway](#)

## Disease

- [Adenocarcinoma](#)
- [Esophageal Neoplasms](#)
- [Genetic Predisposition to Disease](#)
- [Kidney Failure](#)
- [Lung Neoplasms](#)