

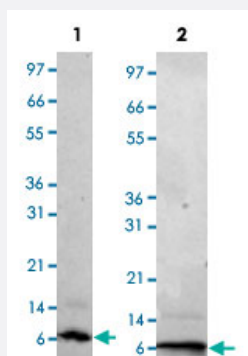
Bioactive

Ccl5 (Rat) Recombinant Protein

Catalog # P4850

Size 20 ug

Applications



Lane 1: non-reducing conditions

Lane 2: reducing conditions

Result of activity analysis

Result of activity analysis

Human THP-1 cells were allowed to migrate to rat Ccl5 at (0, 0.1, 1, 10, 100 and 1000 ng/mL). After 45 minutes, cells that migrated were counted using a luminescent substrate and displayed on the bar graph above.

Specification

Product Description	Rat Ccl5 recombinant protein expressed in <i>Escherichia coli</i> .
Sequence	SPYGSDDTPCCFAYLSLALPRAHVKEYFYTSSKCSNLAVVVFVTRRNRQVCANPEKKWVQEYINYLEMS
Host	Escherichia coli
Theoretical MW (kDa)	7.9
Form	Lyophilized
Preparation Method	<i>Escherichia coli</i> expression system
Endotoxin Level	< 0.1 EU/ug

Activity	The activity is determined by the ability to chemoattract THP-1 cells and is detectable starting at 10 ng/mL.
Quality Control Testing	1 ug/lane in 4-20% Tris-Glycine gel stained with Coomassie Blue Lane 1: non-reducing conditions Lane 2: reducing conditions
Storage Buffer	No additive
Storage Instruction	Store at -20°C on dry atmosphere. After reconstitution with sterilized water, store at -20°C. Aliquot to avoid repeated freezing and thawing.
Note	Result of activity analysis Result of activity analysis Human THP-1 cells were allowed to migrate to rat Ccl5 at (0, 0.1, 1, 10, 100 and 1000 ng/mL). After 45 minutes, cells that migrated were counted using a luminescent substrate and displayed on the bar graph above.

Applications

- Functional Study
- SDS-PAGE

Gene Info — Ccl5

Entrez GeneID	81780
Protein Accession#	P50231
Gene Name	Ccl5
Gene Alias	Rantes, Scya5
Gene Description	chemokine (C-C motif) ligand 5
Gene Ontology	Hyperlink
Other Designations	small inducible cytokine A5