

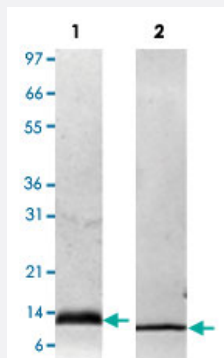
Bioactive

Ccl3 (Rat) Recombinant Protein

Catalog # P4849

Size 20 ug

Applications



Lane 1: non-reducing conditions

Lane 2: reducing conditions

Specification

Product Description	Rat Ccl3 recombinant protein expressed in <i>Escherichia coli</i> .
Sequence	APYGADTPTACCFSYGRQIPRKFIADYFETSSLCSQPGVIFLTQRNRQICADPKETWVQEYITELELNA
Host	Escherichia coli
Theoretical MW (kDa)	7.8
Form	Lyophilized
Preparation Method	<i>Escherichia coli</i> expression system
Endotoxin Level	< 0.1 EU/ug
Activity	The activity is determined by the ability to chemoattract human PBMCs and is detectable starting at 10 ng/mL.
Quality Control Testing	1 ug/lane in 4-20% Tris-Glycine gel stained with Coomassie Blue Lane 1: non-reducing conditions Lane 2: reducing conditions
Storage Buffer	No additive

Storage Instruction

Store at -20°C on dry atmosphere.
After reconstitution with sterilized water, store at -20°C.
Aliquot to avoid repeated freezing and thawing.

Applications

- Functional Study
- SDS-PAGE

Gene Info — Ccl3

Entrez GeneID	25542
Protein Accession#	P50229
Gene Name	Ccl3
Gene Alias	MIP-1a, Scya3
Gene Description	chemokine (C-C motif) ligand 3
Gene Ontology	Hyperlink
Other Designations	Macrophage inflammatory protein 1 alpha (Small inducible cytokine A3) small inducible cytokine A3