

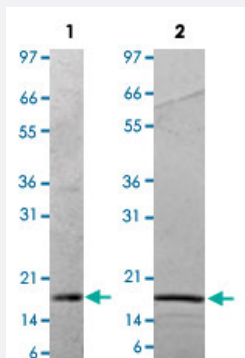
Bioactive

## IL1b (Rat) Recombinant Protein

Catalog # P4841

Size 10 ug

### Applications



Lane 1: non-reducing conditions

Lane 2: reducing conditions

### Specification

#### Product Description

Rat IL1b recombinant protein expressed in *Escherichia coli*.

#### Sequence

MVIPRLHCRLRDEQQKCLVLSDPCELKALHLNGQNISQQVVFMSFVQGETSNDKIPVALGLKG  
LNLYLSCVMKDGTPTLQLESVDPKQYPKKKMEKRFFVNKIEVKTKVEFESAQFPNWYISTSQAEH  
RPVFLGNSNGRDIVDFTMEPVSS

#### Host

Escherichia coli

#### Theoretical MW (kDa)

17.3

#### Form

Lyophilized

#### Preparation Method

*Escherichia coli* expression system

#### Endotoxin Level

&lt; 0.1 EU/ug

#### Activity

Recombinant rat IL1b is fully biologically active when compared to a standard. The ED<sub>50</sub>, as determined by the dose-dependent proliferation of mouse D10S cells, is 40.2 pg/mL.

#### Quality Control Testing

1 ug/lane in 4-20% Tris-Glycine gel stained with Coomassie Blue  
Lane 1: non-reducing conditions  
Lane 2: reducing conditions

**Storage Buffer**

Lyophilized from 10 mM NaP, pH 7.5

**Storage Instruction**

Store at -20°C on dry atmosphere.  
After reconstitution with sterilized water, store at -20°C.  
Aliquot to avoid repeated freezing and thawing.

## Applications

- Functional Study
- SDS-PAGE

## Gene Info — Il1b

**Entrez GeneID**[24494](#)**Protein Accession#**[Q63264](#)**Gene Name**

Il1b

**Gene Alias**

-

**Gene Description**

interleukin 1 beta

**Gene Ontology**[Hyperlink](#)**Gene Summary**

beta

**Other Designations**

interleukin 1, beta