

Bioactive

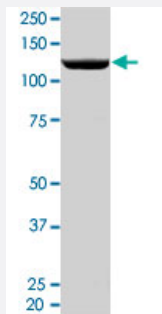
Full-Length

# PRKCE (Human) Recombinant Protein

Catalog # P4757

Size 100 ug

## Applications



## Result of activity analysis

Result of activity analysis

## Specification

<b>Product Description</b>	Human PRKCE (NM_005400, 1 a.a. - 737 a.a.) full-length recombinant protein with GST-His tag expressed in Sf9 cells.
<b>Host</b>	insect
<b>Theoretical MW (kDa)</b>	113.431
<b>Form</b>	Liquid
<b>Preparation Method</b>	Insect cell (Sf9) expression system
<b>Purification</b>	One-step affinity purification using GSH agarose
<b>Concentration</b>	0.366 ug/uL

Activity	184 pmol/ug x min
Quality Control Testing	2 ug/lane SDS-PAGE Stained with Coomassie Blue
Storage Buffer	In 50 mM Tris-HCl, 100 mM NaCl, pH 8.0. (5 mM DTT, 4 mM reduced glutathione, 20% glycerol)
Storage Instruction	Store at -80°C. Aliquot to avoid repeated freezing and thawing
Note	Result of activity analysis Result of activity analysis

## Applications

- Functional Study
- SDS-PAGE

## Gene Info — PRKCE

Entrez GeneID	<a href="#">5581</a>
Protein Accession#	<a href="#">NM_005400</a>
Gene Name	PRKCE
Gene Alias	MGC125656, MGC125657, PKCE, nPKC-epsilon
Gene Description	protein kinase C, epsilon
Omim ID	<a href="#">176975</a>
Gene Ontology	<a href="#">Hyperlink</a>
Gene Summary	<p>Protein kinase C (PKC) is a family of serine- and threonine-specific protein kinases that can be activated by calcium and the second messenger diacylglycerol. PKC family members phosphorylate a wide variety of protein targets and are known to be involved in diverse cellular signaling pathways. PKC family members also serve as major receptors for phorbol esters, a class of tumor promoters. Each member of the PKC family has a specific expression profile and is believed to play a distinct role in cells. The protein encoded by this gene is one of the PKC family members. This kinase has been shown to be involved in many different cellular functions, such as neuron channel activation, apoptosis, cardioprotection from ischemia, heat shock response, as well as insulin exocytosis. Knockout studies in mice suggest that this kinase is important for lipopolysaccharide (LPS)-mediated signaling in activated macrophages and may also play a role in controlling anxiety-like behavior. [provided by RefSeq]</p>

Other Designations

-

## Pathway

- [Fc epsilon RI signaling pathway](#)
- [Fc gamma R-mediated phagocytosis](#)
- [Tight junction](#)
- [Type II diabetes mellitus](#)
- [Vascular smooth muscle contraction](#)

## Disease

- [Disease Models](#)
- [Genetic Predisposition to Disease](#)
- [Narcolepsy](#)
- [Tobacco Use Disorder](#)