

Bioactive

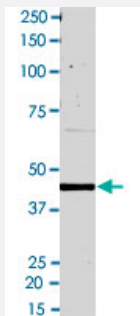
Full-Length

MAPK13 (Human) Recombinant Protein

Catalog # P4738

Size 100 ug

Applications



Result of activity analysis

Result of activity analysis

□

Specification

Product Description	Human MAPK13 (NM_002754.3, 1 a.a. - 365 a.a.) full-length recombinant protein expressed in <i>Escherichia coli</i> .
Host	Escherichia coli
Theoretical MW (kDa)	42.43
Form	Liquid
Preparation Method	<i>Escherichia coli</i> expression system
Purification	GST affinity chromatography
Concentration	0.468 ug/uL

Activity	481 pmol/ug x min
Quality Control Testing	2 ug/lane SDS-PAGE Stained with Coomassie Blue
Storage Buffer	In 50 mM Hepes, 100 mM NaCl, pH 7.5. (5 mM DTT, 20% glycerol)
Storage Instruction	Store at -80°C. Aliquot to avoid repeated freezing and thawing
Note	Result of activity analysis Result of activity analysis

Applications

- Functional Study
- SDS-PAGE

Gene Info — MAPK13

Entrez GeneID	5603
Protein Accession#	NM_002754.3
Gene Name	MAPK13
Gene Alias	MGC99536, PRKM13, SAPK4, p38delta
Gene Description	mitogen-activated protein kinase 13
Omim ID	602899
Gene Ontology	Hyperlink
Gene Summary	The protein encoded by this gene is a member of the MAP kinase family. MAP kinases act as an integration point for multiple biochemical signals, and are involved in a wide variety of cellular processes such as proliferation, differentiation, transcription regulation and development. This kinase is closely related to p38 MAP kinase, both of which can be activated by proinflammatory cytokines and cellular stress. MAP kinase kinases 3, and 6 can phosphorylate and activate this kinase. Transcription factor ATF2, and microtubule dynamics regulator stathmin have been shown to be the substrates of this kinase. [provided by RefSeq]
Other Designations	OTTHUMP00000016282 mitogen-activated protein kinase p38 delta stress-activated protein kinase 4

Pathway

- [Amyotrophic lateral sclerosis \(ALS\)](#)
- [Epithelial cell signaling in Helicobacter pylori infection](#)
- [Fc epsilon RI signaling pathway](#)
- [GnRH signaling pathway](#)
- [Leukocyte transendothelial migration](#)
- [MAPK signaling pathway](#)
- [Neurotrophin signaling pathway](#)
- [T cell receptor signaling pathway](#)
- [Toll-like receptor signaling pathway](#)
- [VEGF signaling pathway](#)

Disease

- [Cardiovascular Diseases](#)
- [Diabetes Mellitus](#)
- [Edema](#)
- [HIV Infections](#)