

Bioactive

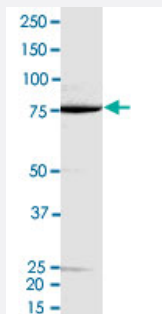
Full-Length

## RP6-213H19.1 (Human) Recombinant Protein

Catalog # P4728

Size 100 ug

### Applications



### Result of activity analysis

Result of activity analysis

□

### Specification

<b>Product Description</b>	Human RP6-213H19.1 (NM_016542, 1 a.a. - 416 a.a.) full-length recombinant protein with GST-His tag expressed in Sf9 cells.
<b>Host</b>	insect
<b>Theoretical MW (kDa)</b>	76.42400000000001
<b>Form</b>	Liquid
<b>Preparation Method</b>	Insect cell (Sf9) expression system
<b>Purification</b>	One-step affinity purification using GSH-agarose
<b>Concentration</b>	0.209 ug/uL

Activity	18 pmol/ug x min
Quality Control Testing	2 ug/lane SDS-PAGE Stained with Coomassie Blue
Storage Buffer	In 50 mM Tris-HCl, 100 mM NaCl, pH 8.0. (5 mM DTT, 15 mM reduced glutathione, 20% glycerol)
Storage Instruction	Store at -80°C. Aliquot to avoid repeated freezing and thawing
Note	Result of activity analysis Result of activity analysis

## Applications

- Functional Study
- SDS-PAGE

## Gene Info — RP6-213H19.1

Entrez GeneID	<a href="#">51765</a>
Protein Accession#	<a href="#">NM_016542</a>
Gene Name	RP6-213H19.1
Gene Alias	MASK, MST4
Gene Description	serine/threonine protein kinase MST4
Omim ID	<a href="#">300547</a>
Gene Ontology	<a href="#">Hyperlink</a>
Gene Summary	The product of this gene is a member of the GCK group III family of kinases, which are a subset of the Ste20-like kinases. The encoded protein contains an amino-terminal kinase domain, and a carboxy-terminal regulatory domain that mediates homodimerization. The protein kinase localizes to the Golgi apparatus and is specifically activated by binding to the Golgi matrix protein GM130. It is also cleaved by caspase-3 in vitro, and may function in the apoptotic pathway. Several alternatively spliced transcript variants of this gene have been described, but the full-length nature of some of these variants has not been determined. [provided by RefSeq]
Other Designations	Mst3 and SOK1-related kinase STE20-like kinase MST4 mammalian Ste20-like protein kinase 4 mammalian sterile 20-like 4 serine/threonine protein kinase MASK