

Bioactive

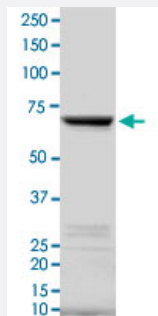
Full-Length

MAPK3 (Human) Recombinant Protein

Catalog # P4688

Size 100 ug

Applications



Result of activity analysis

Result of activity analysis

□

Specification

Product Description	Human MAPK3 (NM_002746.2, 1 a.a. -P 379 a.a.) full-length recombinant protein with GST tag expressed in Sf9 cells.
Host	insect
Theoretical MW (kDa)	69.402
Form	Liquid
Preparation Method	Insect cell (Sf9) expression system
Purification	GST affinity chromatography
Concentration	0.445 ug/uL

Activity	95 pmol/ug x min
Quality Control Testing	2 ug/lane SDS-PAGE Stained with Coomassie Blue
Storage Buffer	In 50 mM Hepes, 100 mM NaCl, pH 7.5. (5 mM DTT, 20% glycerol)
Storage Instruction	Store at -80°C. Aliquot to avoid repeated freezing and thawing
Note	Result of activity analysis Result of activity analysis

Applications

- Functional Study
- SDS-PAGE

Gene Info — MAPK3

Entrez GeneID	5595
Protein Accession#	NM_002746.2
Gene Name	MAPK3
Gene Alias	ERK1, HS44KDAP, HUMKER1A, MGC20180, P44ERK1, P44MAPK, PRKM3
Gene Description	mitogen-activated protein kinase 3
Omim ID	601795
Gene Ontology	Hyperlink
Gene Summary	The protein encoded by this gene is a member of the MAP kinase family. MAP kinases, also known as extracellular signal-regulated kinases (ERKs), act in a signaling cascade that regulates various cellular processes such as proliferation, differentiation, and cell cycle progression in response to a variety of extracellular signals. This kinase is activated by upstream kinases, resulting in its translocation to the nucleus where it phosphorylates nuclear targets. Alternatively spliced transcript variants encoding different protein isoforms have been described. [provided by RefSeq]
Other Designations	OTTHUMP00000174538 OTTHUMP00000174540 extracellular signal-regulated kinase 1 extracellular signal-related kinase 1

Pathway

- [Acute myeloid leukemia](#)
- [Adherens junction](#)
- [Axon guidance](#)
- [B cell receptor signaling pathway](#)
- [Bladder cancer](#)
- [Chemokine signaling pathway](#)
- [Chronic myeloid leukemia](#)
- [Colorectal cancer](#)
- [Dorso-ventral axis formation](#)
- [Endometrial cancer](#)
- [ErbB signaling pathway](#)
- [Fc epsilon RI signaling pathway](#)
- [Fc gamma R-mediated phagocytosis](#)
- [Focal adhesion](#)
- [Gap junction](#)
- [Glioma](#)
- [GnRH signaling pathway](#)
- [Insulin signaling pathway](#)
- [Long-term depression](#)
- [Long-term potentiation](#)
- [MAPK signaling pathway](#)
- [Melanogenesis](#)
- [Melanoma](#)

- [mTOR signaling pathway](#)
- [Natural killer cell mediated cytotoxicity](#)
- [Neurotrophin signaling pathway](#)
- [Non-small cell lung cancer](#)
- [Pancreatic cancer](#)
- [Pathways in cancer](#)
- [Prion diseases](#)
- [Prostate cancer](#)
- [Regulation of actin cytoskeleton](#)
- [Renal cell carcinoma](#)
- [T cell receptor signaling pathway](#)
- [TGF-beta signaling pathway](#)
- [Thyroid cancer](#)
- [Toll-like receptor signaling pathway](#)
- [Type II diabetes mellitus](#)
- [Vascular smooth muscle contraction](#)
- [VEGF signaling pathway](#)

Disease

- [Asthma](#)
- [Autistic Disorder](#)
- [Disease Models](#)
- [Genetic Predisposition to Disease](#)