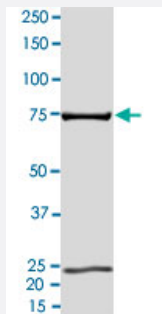


Bioactive

EPHA3 (Human) Recombinant Protein

Catalog # P4678 Size 100 ug

Applications



Result of activity analysis

Result of activity analysis

□

Specification

Product Description	Human EPHA3 (NM_005233, 569 a.a. - 983 a.a.) partial recombinant protein with GST-His tag expressed in Sf9 cells.
Host	insect
Theoretical MW (kDa)	75.68000000000001
Form	Liquid
Preparation Method	Insect cell (Sf9) expression system
Purification	One-step affinity purification using GSH-agarose
Concentration	0.140 ug/uL

Activity	184 pmol/ug x min
Quality Control Testing	2 ug/lane SDS-PAGE Stained with Coomassie Blue
Storage Buffer	In 50 mM Tris-HCl, 100 mM NaCl, pH 8.0. (5 mM DTT, 4 mM reduced glutathione, 20% glycerol)
Storage Instruction	Store at -80°C. Aliquot to avoid repeated freezing and thawing
Note	Result of activity analysis Result of activity analysis

Applications

- Functional Study
- SDS-PAGE

Gene Info — EPHA3

Entrez GeneID	2042
Protein Accession#	NM_005233
Gene Name	EPHA3
Gene Alias	ETK, ETK1, HEK, HEK4, TYRO4
Gene Description	EPH receptor A3
Omim ID	179611
Gene Ontology	Hyperlink
Gene Summary	This gene belongs to the ephrin receptor subfamily of the protein-tyrosine kinase family. EPH and EPH-related receptors have been implicated in mediating developmental events, particularly in the nervous system. Receptors in the EPH subfamily typically have a single kinase domain and an extracellular region containing a Cys-rich domain and 2 fibronectin type III repeats. The ephrin receptors are divided into 2 groups based on the similarity of their extracellular domain sequences and their affinities for binding ephrin-A and ephrin-B ligands. This gene encodes a protein that binds ephrin-A ligands. Two alternatively spliced transcript variants have been described for this gene. [provided by RefSeq]
Other Designations	TYRO4 protein tyrosine kinase eph-like tyrosine kinase 1 ephrin receptor EphA3 human embryo kinase 1

Pathway

- [Axon guidance](#)

Disease

- [Genetic Predisposition to Disease](#)
- [Pancreatic cancer](#)
- [Pancreatic Neoplasms](#)