

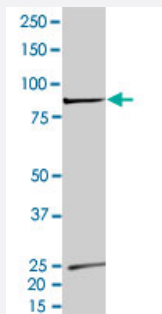
Bioactive

Full-Length

CLK1 (Human) Recombinant Protein

Catalog # P4669 Size 100 ug

Applications



Result of activity analysis

Result of activity analysis

□

Specification

Product Description	Human CLK1 (NM_004071.2, 1 a.a. - 484 a.a.) full-length recombinant protein with GST-His tag expressed in Sf9 cells.
Host	insect
Theoretical MW (kDa)	86.69499999999979
Form	Liquid
Preparation Method	Insect cell (Sf9) expression system
Purification	One-step affinity purification using GSH-agarose
Concentration	0.139 ug/uL

Activity	0.4 pmol/ug x min
Quality Control Testing	2 ug/lane SDS-PAGE Stained with Coomassie Blue
Storage Buffer	In 50 mM Tris-HCl, 100 mM NaCl, pH 8.0. (5 mM DTT, 4 mM reduced glutathione, 20% glycerol)
Storage Instruction	Store at -80°C. Aliquot to avoid repeated freezing and thawing
Note	Result of activity analysis Result of activity analysis

Applications

- Functional Study
- SDS-PAGE

Gene Info — CLK1

Entrez GeneID	1195
Protein Accession#	NM_004071.2
Gene Name	CLK1
Gene Alias	CLK, CLK/STY, STY
Gene Description	CDC-like kinase 1
Omim ID	601951
Gene Ontology	Hyperlink
Gene Summary	This gene encodes a member of the CDC2-like (or LAMMER) family of dual specificity protein kinases. In the nucleus, the encoded protein phosphorylates serine/arginine-rich proteins involved in pre-mRNA processing, releasing them into the nucleoplasm. The choice of splice sites during pre-mRNA processing may be regulated by the concentration of transacting factors, including serine/arginine rich proteins. Therefore, the encoded protein may play an indirect role in governing splice site selection. Multiple transcript variants encoding different isoforms have been found for this gene. [provided by RefSeq]
Other Designations	CDC28/CDC2-like kinase dual specificity protein kinase CLK1 protein tyrosine kinase STY