

Bioactive

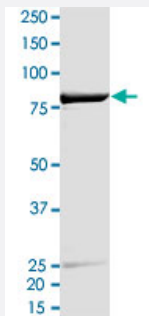
Full-Length

CDC42BPB (Human) Recombinant Protein

Catalog # P4638

Size 100 ug

Applications



Result of activity analysis

Result of activity analysis

□

Specification

Product Description	Human CDC42BPB (NM_006035, 1 a.a. - 472 a.a.) full-length recombinant protein with GST-His tag expressed in Sf9 cells.
Host	insect
Theoretical MW (kDa)	84.444
Form	Liquid
Preparation Method	Insect cell (Sf9) expression system
Purification	One-step affinity purification using GSH-agarose
Concentration	0.205 ug/uL

Activity	14 pmol/ug x min
Quality Control Testing	2 ug/lane SDS-PAGE Stained with Coomassie Blue
Storage Buffer	In 50 mM Tris-HCl, 100 mM NaCl, pH 8.0. (5 mM DTT, 4 mM reduced glutathione, 20% glycerol)
Storage Instruction	Store at -80°C. Aliquot to avoid repeated freezing and thawing
Note	Result of activity analysis Result of activity analysis

Applications

- Functional Study
- SDS-PAGE

Gene Info — CDC42BPB

Entrez GeneID	9578
Protein Accession#	NM_006035
Gene Name	CDC42BPB
Gene Alias	KIAA1124, MRCKB
Gene Description	CDC42 binding protein kinase beta (DMPK-like)
Gene Ontology	Hyperlink
Gene Summary	This gene encodes a member of the serine/threonine protein kinase family. The encoded protein contains a Cdc42/Rac-binding p21 binding domain resembling that of PAK kinase. The kinase domain of this protein is most closely related to that of myotonic dystrophy kinase-related ROK. Studies of the similar gene in rat suggested that this kinase may act as a downstream effector of Cdc 42 in cytoskeletal reorganization. [provided by RefSeq]
Other Designations	CDC42-binding protein kinase beta CDC42-binding protein kinase beta (DMPK-like) myotonic dystrophy protein kinase-like beta

Disease

- [Tobacco Use Disorder](#)