

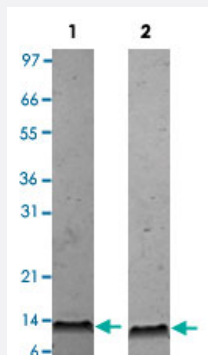
Bioactive

# Cxcl12 (Beta) (Mouse) Recombinant Protein

Catalog # P4628

Size 10 ug

## Applications



Lane 1: non-reducing conditions

Lane 2: reducing conditions

## Result of activity analysis

Result of activity analysis

Triplicate samples of primary human neutrophils from three donors were allowed to migrate to mouse Cxcl12 (beta) (10, 100 and 1000 ng/mL). After 30 minutes, cells that migrated were counted using a luminescent substrate and displayed on the bar graph above.

## Specification

Product Description	Mouse Cxcl12 (beta) (P40224-2) recombinant protein expressed in <i>Escherichia coli</i> .
Sequence	KPVLSYRCPCRFFESHARANVKHLKILNTPNCALQIVARLKNNNRQVCIDPKLKWIQEYLEKALN KRLKM
Host	<i>Escherichia coli</i>
Theoretical MW (kDa)	8.5
Form	Lyophilized
Preparation Method	<i>Escherichia coli</i> expression system

Endotoxin Level	< 0.1 EU/ug
Activity	The activity is determined by the ability to chemoattract human peripheral T cells and is detectable at 5-100 ng/mL.
Quality Control Testing	1 ug/lane in 4-20% Tris-Glycine gel Stained with Coomassie Blue Lane 1: non-reducing conditions Lane 2: reducing conditions
Storage Buffer	No additive
Storage Instruction	Store at -20°C on dry atmosphere. After reconstitution with sterilized water, store at -20°C or lower. Aliquot to avoid repeated freezing and thawing.
Note	Result of activity analysis Result of activity analysis Triplicate samples of primary human neutrophils from three donors were allowed to migrate to mouse Cxcl12 (beta) (10, 100 and 1000 ng/mL). After 30 minutes, cells that migrated were counted using a luminescent substrate and displayed on the bar graph above.

## Applications

- Functional Study
- SDS-PAGE

## Gene Info — Cxcl12

Entrez GeneID	<a href="#">20315</a>
Protein Accession#	<a href="#">P40224-2</a>
Gene Name	Cxcl12
Gene Alias	AI174028, PBSF, PBSF/SDF-1, SDF-1, Scyb12, Sdf1, Sdf1a, Sdf1b, TLSF, TLSF-a, TLSF-b, TPAR1
Gene Description	chemokine (C-X-C motif) ligand 12
Gene Ontology	<a href="#">Hyperlink</a>
Other Designations	OTTMUSP00000026112 OTTMUSP00000026113 OTTMUSP00000026114 pre-B-cell growth-stimulating factor stromal cell derived factor 1