

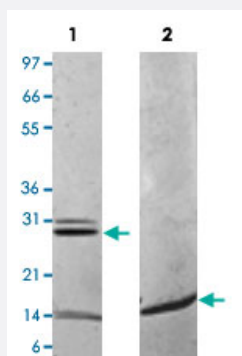
Bioactive

## IL17a (Mouse) Recombinant Protein

Catalog # P4623

Size 25 ug

### Applications



Lane 1: non-reducing conditions

Lane 2: reducing conditions

### Result of activity analysis

Result of activity analysis

Serial dilutions of mouse IL17a (starting at 2.5 ug/mL) were added to NIH 3T3 cells. After 48 hours, production of mouse IL-6 was measured and the linear portion of the curve was used to calculate the ED50.

### Specification

Product Description	Mouse IL17a (Q62386) recombinant protein expressed in <i>Escherichia coli</i> .
Sequence	MAAIIPQSSACPNTAEKDFLQNVKVNLIKVFNSLGAKVSSRRPSDYLNIRSTSPWTLHRNEDPDRYP SVIWEAQCRHQRCVNAEGKLDHMHNSVLIQQEILVLKREPESCPFTFRVEKMLVGVGCTCVASV RQAA
Host	<i>Escherichia coli</i>
Theoretical MW (kDa)	30
Form	Lyophilized
Preparation Method	<i>Escherichia coli</i> expression system

Endotoxin Level	< 0.1 EU/ug
Activity	The activity is determined by the dose-dependent production of IL-6 by NIH 3T3 fibroblasts. The expected ED <sub>50</sub> for this effect is 0.3-1.5 ng/mL.
Quality Control Testing	1 ug/lane in 4-20% Tris-Glycine gel Stained with Coomassie Blue Lane 1: non-reducing conditions Lane 2: reducing conditions
Storage Buffer	No additive
Storage Instruction	Store at -20°C on dry atmosphere. After reconstitution with sterilized water, store at -20°C. Aliquot to avoid repeated freezing and thawing.
Note	Result of activity analysis Result of activity analysis Serial dilutions of mouse Il17a (starting at 2.5 ug/mL) were added to NIH 3T3 cells. After 48 hours, production of mouse IL-6 was measured and the linear portion of the curve was used to calculate the ED50.

## Applications

- Functional Study
- SDS-PAGE

## Gene Info — Il17a

Entrez GeneID	<a href="#">16171</a>
Protein Accession#	<a href="#">Q62386</a>
Gene Name	Il17a
Gene Alias	Ctla-8, Ctla8, Il17
Gene Description	interleukin 17A
Gene Ontology	<a href="#">Hyperlink</a>
Other Designations	interleukin 17