

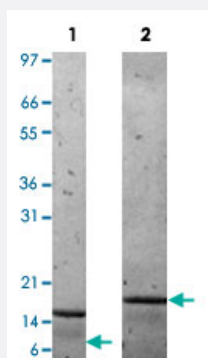
Bioactive

IL16 (Mouse) Recombinant Protein

Catalog # P4618

Size 10 ug

Applications



Lane 1: non-reducing conditions

Lane 2: reducing conditions

Result of activity analysis

Result of activity analysis

Human T cells were allowed to migrate to mouse IL16 at (0, 5, 20, 100 and 500 ng/mL). After 4 hours, cells that migrated were counted using a luminescent substrate and displayed on the bar graph above.

Specification

Product Description	Mouse IL16 (O54824) recombinant protein expressed in <i>Escherichia coli</i> .
Sequence	MHDLNSSTDASAASASASDISVESKEATVCTVTLEKTSAGLGFSLEGGKGSLSHGDKPLTINRIFKG DRTGEMVQPGDEILQLAGTAVQGLTRFEAWNVIKALPDGPVTMIRRTSLQCKQTTASADS
Host	<i>Escherichia coli</i>
Theoretical MW (kDa)	13.2
Form	Lyophilized
Preparation Method	<i>Escherichia coli</i> expression system
Endotoxin Level	< 0.1 EU/ug

Activity	The activity is determined by the dose-dependent chemoattraction of primary human T cells and is detectable starting at 5 ng/mL.
Quality Control Testing	1 ug/lane in 4-20% Tris-Glycine gel Stained with Coomassie Blue Lane 1: non-reducing conditions Lane 2: reducing conditions
Storage Buffer	Lyophilized 10 mM Na ₂ PO ₄ , pH 7.5.
Storage Instruction	Store at -20°C on dry atmosphere. After reconstitution with sterilized water, store at -20°C. Aliquot to avoid repeated freezing and thawing.
Note	Result of activity analysis Result of activity analysis Human T cells were allowed to migrate to mouse IL16 at (0, 5, 20, 100 and 500 ng/mL). After 4 hours, cells that migrated were counted using a luminescent substrate and displayed on the bar graph above.

Applications

- Functional Study
- SDS-PAGE

Gene Info — IL16

Entrez GeneID	16170
Protein Accession#	O54824
Gene Name	IL16
Gene Alias	KIAA4048, mKIAA4048
Gene Description	interleukin 16
Gene Ontology	Hyperlink
Other Designations	-