

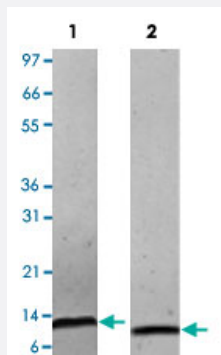
Bioactive

Ccl3 (Mouse) Recombinant Protein

Catalog # P4612

Size 10 ug

Applications



Lane 1: non-reducing conditions

Lane 2: reducing conditions

Result of activity analysis

Result of activity analysis

Human THP-1 cells were allowed to migrate to mouse Ccl3 (0, 0.1, 1, 10, 100 and 1000 ng/mL). After 45 minutes, cells that migrated were counted using a luminescent substrate and displayed on the bar graph above.

Specification

Product Description	Mouse Ccl3 (Q5QNW0) recombinant protein expressed in <i>Escherichia coli</i> .
Sequence	APYGADTPTACCFSYSRKIPRQFMDYFETSSLCSQPGVIFLTRNRQICADSKETWVQEYITDLELNA
Host	<i>Escherichia coli</i>
Theoretical MW (kDa)	7.8
Form	Lyophilized
Preparation Method	<i>Escherichia coli</i> expression system
Endotoxin Level	< 0.1 EU/ug

Activity	The activity is determined by the ability to chemoattract human PBMCs and THP-1 cells and is detectable starting at 1 ng/mL and 10 ng/mL respectively.
Quality Control Testing	1 ug/lane in 4-20% Tris-Glycine gel Stained with Coomassie Blue Lane 1: non-reducing conditions Lane 2: reducing conditions
Storage Buffer	No additive
Storage Instruction	Store at -20°C on dry atmosphere. After reconstitution with sterilized water, store at -20°C. Aliquot to avoid repeated freezing and thawing.
Note	Result of activity analysis Result of activity analysis Human THP-1 cells were allowed to migrate to mouse Ccl3 (0, 0.1, 1, 10, 100 and 1000 ng/mL). After 45 minutes, cells that migrated were counted using a luminescent substrate and displayed on the bar graph above.

Applications

- Functional Study
- SDS-PAGE

Gene Info — Ccl3

Entrez GeneID	20302
Protein Accession#	Q5QNW0
Gene Name	Ccl3
Gene Alias	AI323804, G0S19-1, LD78alpha, MIP-1alpha, MIP1-(a), MIP1-alpha, Mip1a, Scya3
Gene Description	chemokine (C-C motif) ligand 3
Gene Ontology	Hyperlink
Other Designations	MIP-1 alpha MIP1 (a) OTTMUSP00000000942 macrophage inflammatory protein-1 alpha small inducible cytokine A3