

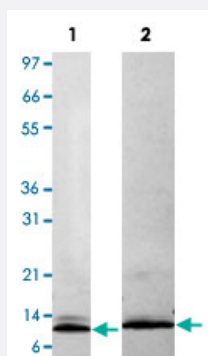
Bioactive

Ccl7 (Mouse) Recombinant Protein

Catalog # P4611

Size 10 ug

Applications



Lane 1: non-reducing conditions

Lane 2: reducing conditions

Result of activity analysis

Result of activity analysis

Human THP-1 cells were allowed to migrate to mouse Ccl3 at (0, 0.1, 1, 10, 100 and 1000 ng/mL). After 45 minutes, cells that migrated were counted using a luminescent substrate and displayed on the bar graph above.

Specification

Product Description	Mouse Ccl7 (Q03366.1) recombinant protein expressed in <i>Escherichia coli</i> .
Sequence	QPDGPNASTCCYVKKQKIPKRNLSYRRITSSRCPWEAVIFKTKKGMEVCAEAHQKWVEEAIAYLDMKTPTPKP
Host	Escherichia coli
Theoretical MW (kDa)	8.5
Form	Lyophilized
Preparation Method	<i>Escherichia coli</i> expression system
Endotoxin Level	< 0.1 EU/ug

Activity	The activity is determined by the ability to chemoattract THP-1 cells and is detectable starting at 100 0 ng/mL.
Quality Control Testing	1 ug/lane in 4-20% Tris-Glycine gel Stained with Coomassie Blue Lane 1: non-reducing conditions Lane 2: reducing conditions
Storage Buffer	No additive
Storage Instruction	Store at -20°C on dry atmosphere. After reconstitution with sterilized water, store at -20°C. Aliquot to avoid repeated freezing and thawing.
Note	Result of activity analysis Result of activity analysis Human THP-1 cells were allowed to migrate to mouse Ccl3 at (0, 0.1, 1, 10, 100 and 1000 ng/mL). After 45 minutes, cells that migrated were counted using a luminescent substrate and displayed on the bar graph above.

Applications

- Functional Study
- SDS-PAGE

Gene Info — Ccl7

Entrez GeneID	20306
Protein Accession#	Q03366.1
Gene Name	Ccl7
Gene Alias	MCP-3, Scya7, fic, marc, mcp3
Gene Description	chemokine (C-C motif) ligand 7
Gene Ontology	Hyperlink
Other Designations	OTTMUSP00000000787 RANTES/sis homolog small inducible cytokine A7