

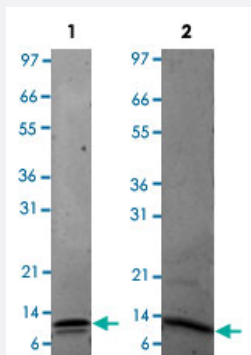
Bioactive

## Cxcl10 (Mouse) Recombinant Protein

Catalog # P4609

Size 25 ug

### Applications



Lane 1: non-reducing conditions

Lane 2: reducing conditions

### Result of activity analysis

Result of activity analysis

Human T cells were allowed to migrate to mouse Cxcl10 at (0, 5, 20, 100 and 500 ng/mL). After 4 hours, cells that migrated were counted using a luminescent substrate and displayed on the bar graph above.

### Specification

Product Description	Mouse Cxcl10 (P17515) recombinant protein expressed in <i>Escherichia coli</i> .
Sequence	IPLARTVRCNCIHIDGDPVRMRAIGKLEIIPASLSCPRVEIATMKKNDEQRCLNPESKTIKNLMKAFSQKRSKRAP
Host	Escherichia coli
Theoretical MW (kDa)	8.699999999999999
Form	Lyophilized
Preparation Method	<i>Escherichia coli</i> expression system
Endotoxin Level	< 0.1 EU/ug

<b>Activity</b>	The activity is determined by the ability to chemoattract primary human T cells and is detectable starting at 5 ng/mL.
<b>Quality Control Testing</b>	1 ug/lane in 4-20% Tris-Glycine gel Stained with Coomassie Blue Lane 1: non-reducing conditions Lane 2: reducing conditions
<b>Storage Buffer</b>	No additive
<b>Storage Instruction</b>	Store at -20°C on dry atmosphere. After reconstitution with sterilized water, store at -20°C. Aliquot to avoid repeated freezing and thawing.
<b>Note</b>	Result of activity analysis Result of activity analysis Human T cells were allowed to migrate to mouse Cxcl10 at (0, 5, 20, 100 and 500 ng/mL). After 4 hours, cells that migrated were counted using a luminescent substrate and displayed on the bar graph above.

## Applications

- Functional Study
- SDS-PAGE

## Gene Info — Cxcl10

<b>Entrez GeneID</b>	<a href="#">15945</a>
<b>Protein Accession#</b>	<a href="#">P17515</a>
<b>Gene Name</b>	Cxcl10
<b>Gene Alias</b>	C7, CRG-2, INP10, IP-10, IP10, Ili10, Scyb10, gIP-10, mob-1
<b>Gene Description</b>	chemokine (C-X-C motif) ligand 10
<b>Gene Ontology</b>	<a href="#">Hyperlink</a>
<b>Gene Summary</b>	member 10
<b>Other Designations</b>	interferon activated gene 10 small inducible cytokine B subfamily (Cys-X-Cys), member 10