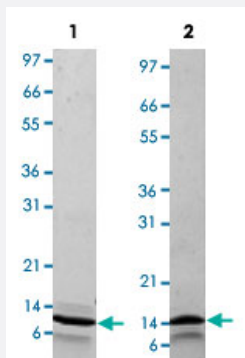


Bioactive

## Lep (Mouse) Recombinant Protein

Catalog # P4604      Size 1 mg

### Applications



Lane 1: non-reducing conditions

Lane 2: reducing conditions

### Result of activity analysis

Result of activity analysis

Serial dilutions of mouse Lep were added to Baf/3 cells. After 44 hours cell proliferation was measured and the linear portion of the curve was used to determine the ED50.

### Specification

Product Description	Mouse Lep (Q544U0) recombinant protein expressed in <i>Escherichia coli</i> .
Sequence	MVPIQKVQDDTKTIKTVTRINDISHTQSVSAKQRV TGLDFIPGLHPILSLSKMDQTLAVYQQVLTSL PSQNVLQIANDLENLRDLLHLLAFSKSCSLPQTSG LQKPESLDGVLEASLYSTEVVALSRLQGSL QDILQQLDVSPEC
Host	<i>Escherichia coli</i>
Theoretical MW (kDa)	16.1
Form	Lyophilized
Preparation Method	<i>Escherichia coli</i> expression system

Endotoxin Level	< 0.1 EU/ug
Activity	The activity is determined by the dose-dependent proliferation of BaF/3. The expected ED <sub>50</sub> for this effect is 0.4-0.6 ng/mL.
Quality Control Testing	1 ug/lane in 4-20% Tris-Glycine gel Stained with Coomassie Blue Lane 1: non-reducing conditions Lane 2: reducing conditions
Storage Buffer	Lyophilized with 0.1% TFA.
Storage Instruction	Store at -20°C on dry atmosphere. After reconstitution with sterilized water, store at -20°C. Aliquot to avoid repeated freezing and thawing.
Note	Result of activity analysis Result of activity analysis Serial dilutions of mouse Lep were added to Baf/3 cells. After 44 hours cell proliferation was measured and the linear portion of the curve was used to determine the ED50.

## Applications

- Functional Study
- SDS-PAGE

## Gene Info — Lep

Entrez GeneID	<a href="#">16846</a>
Protein Accession#	<a href="#">Q544U0</a>
Gene Name	Lep
Gene Alias	ob, obese
Gene Description	leptin
Gene Ontology	<a href="#">Hyperlink</a>
Other Designations	-