

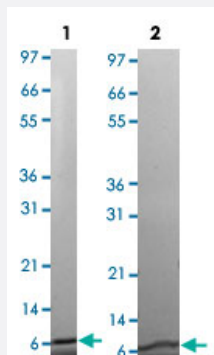
Bioactive

Cxcl1 (Mouse) Recombinant Protein

Catalog # P4603

Size 20 ug

Applications



Lane 1: non-reducing conditions

Lane 2: reducing conditions

Result of activity analysis

Result of activity analysis

Triplicate samples of primary human neutrophils from three donors were allowed to migrate to mouse Cxcl1 (10, 100 and 1000 ng/mL). After 30 minutes, cells that migrated were counted using a luminescent substrate and displayed on the bar graph above.

Specification

Product Description	Mouse Cxcl1 (P12850) recombinant protein expressed in <i>Escherichia coli</i> .
Sequence	APIANELRCQCLQTMAGIHLKNIQSLKVLPSGPHCTQTEVIATLKNGREACLDPEAPLVQKIVQKML KGVPK
Host	<i>Escherichia coli</i>
Theoretical MW (kDa)	7.8
Form	Lyophilized
Preparation Method	<i>Escherichia coli</i> expression system

Endotoxin Level	< 0.1 EU/ug
Activity	The activity is determined by the ability to chemoattract human neutrophils cells and is detectable starting at 10 ng/mL.
Quality Control Testing	1 ug/lane in 4-20% Tris-Glycine gel Stained with Coomassie Blue Lane 1: non-reducing conditions Lane 2: reducing conditions
Storage Buffer	No additive
Storage Instruction	Store at -20°C on dry atmosphere. After reconstitution with sterilized water, store at -20°C. Aliquot to avoid repeated freezing and thawing.
Note	Result of activity analysis Result of activity analysis Triplicate samples of primary human neutrophils from three donors were allowed to migrate to mouse Cxcl1 (10, 100 and 1000 ng/mL). After 30 minutes, cells that migrated were counted using a luminescent substrate and displayed on the bar graph above.

Applications

- Functional Study
- SDS-PAGE

Gene Info — Cxcl1

Entrez GeneID	14825
Protein Accession#	P12850
Gene Name	Cxcl1
Gene Alias	Fsp, Gro1, KC, Mgsa, N51, Scyb1, gro
Gene Description	chemokine (C-X-C motif) ligand 1
Gene Ontology	Hyperlink
Other Designations	GRO1 oncogene KC/GR)-alpha KC/GRO-alpha OTTMUSP00000018305