

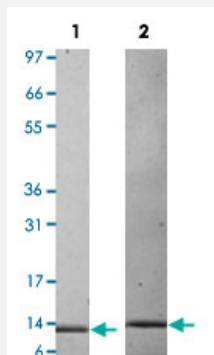
Bioactive

Csf2 (Mouse) Recombinant Protein

Catalog # P4595

Size 20 ug

Applications



Lane 1: non-reducing conditions

Lane 2: reducing conditions

Result of activity analysis

Result of activity analysis

Serial dilutions of mouse Csf2, starting at 10 ng/mL, were added to FDCP-1 cells. After 91 hours, cell proliferation was measured and the linear portion of the curve was used to calculate the ED50.

Specification

Product Description	Mouse Csf2 (P01587) recombinant protein expressed in <i>Escherichia coli</i> .
Sequence	MAPTRSPITVTRPWKHVEAIKEALNLLDDMPVTLNEEVEVVSNEFSFKKLTVCVQTRLKIFEQGLRG NFTKLKGALNMTASYQTYCPPTPETDCETQVTTYADFDLSKTLTDIPFECKKPVQK
Host	<i>Escherichia coli</i>
Theoretical MW (kDa)	14.3
Form	Lyophilized
Preparation Method	<i>Escherichia coli</i> expression system
Endotoxin Level	< 0.1 EU/ug

Activity	The activity is determined by the dose-dependent proliferation of mouse FDC-P1 cell line. The expected ED ₅₀ for this effect is 3-5 pg/mL.
Quality Control Testing	1 ug/lane in 4-20% Tris-Glycine gel Stained with Coomassie Blue Lane 1: non-reducing conditions Lane 2: reducing conditions
Storage Buffer	Lyophilized with 10 mM acetic acid.
Storage Instruction	Store at -20°C on dry atmosphere. After reconstitution with sterilized water, store at -20°C. Aliquot to avoid repeated freezing and thawing.
Note	Result of activity analysis Result of activity analysis Serial dilutions of mouse Csf2, starting at 10 ng/mL, were added to FDCP-1 cells. After 91 hours, cell proliferation was measured and the linear portion of the curve was used to calculate the ED50.

Applications

- Functional Study
- SDS-PAGE

Gene Info — Csf2

Entrez GeneID	12981
Protein Accession#	P01587
Gene Name	Csf2
Gene Alias	Csfgm, Gm-CSf, MGC151255, MGC151257, MGHGM
Gene Description	colony stimulating factor 2 (granulocyte-macrophage)
Gene Ontology	Hyperlink
Other Designations	OTTMUSP00000005830 colony stimulating factor 2 granulocyte-macrophage colony stimulating factor 2 put. GM-CSF