

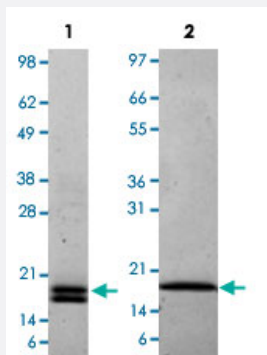
Bioactive

Fgf2 (Mouse) Recombinant Protein

Catalog # P4592

Size 50 ug

Applications



Lane 1: non-reducing conditions

Lane 2: reducing conditions

Result of activity analysis

Result of activity analysis

Serial dilutions of mouse Fgf2, starting at 5 ng/mL, were added to NIH 3T3 cells. Cell proliferation was measured after 41 hours and the linear portion of the curve was used to calculate the ED50.

Specification

Product Description	Mouse Fgf2 (P15655) recombinant protein expressed in <i>Escherichia coli</i> .
Sequence	MPALPEDGGAAFPPGHFKDPKRLYCKNGGFFLRHPDGRVDGVREKSDPHVKLQLQAEERGVS SIKGVCANRYLAMKEDGRLLASKCVTEECFFFERLESNNYNTYRSRKYSWYVALKRTGQYKLGS KTGPGQKAILFLPMSAKS
Host	<i>Escherichia coli</i>
Theoretical MW (kDa)	16.3
Form	Lyophilized
Preparation Method	<i>Escherichia coli</i> expression system

Endotoxin Level	< 0.1 EU/ug
Activity	The activity is determined by the dose-dependent proliferation of BALB/3T3 cells. The expected ED ₅₀ for this effect is 0.1-0.16 ng/mL.
Quality Control Testing	1 ug/lane in 4-20% Tris-Glycine gel Stained with Coomassie Blue Lane 1: non-reducing conditions Lane 2: reducing conditions
Storage Buffer	Lyophilized from 5 mM Na ₂ PO ₄ , 50 mM NaCl, pH 7.5.
Storage Instruction	Store at -20°C on dry atmosphere. After reconstitution with sterilized water, store at -20°C. Aliquot to avoid repeated freezing and thawing.
Note	Result of activity analysis Result of activity analysis Serial dilutions of mouse Fgf2, starting at 5 ng/mL, were added to NIH 3T3 cells. Cell proliferation was measured after 41 hours and the linear portion of the curve was used to calculate the ED50.

Applications

- Functional Study
- SDS-PAGE

Gene Info — Fgf2

Entrez GeneID	14173
Protein Accession#	P15655
Gene Name	Fgf2
Gene Alias	Fgf-2, Fgfb, bFGF
Gene Description	fibroblast growth factor 2
Gene Ontology	Hyperlink
Other Designations	-