

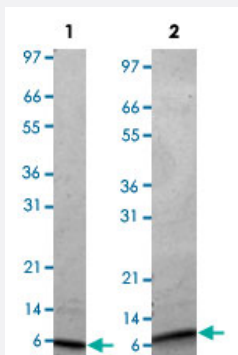
Bioactive

# Igf1 (Mouse) Recombinant Protein

Catalog # P4585

Size 50 ug

## Applications



Lane 1: non-reducing conditions

Lane 2: reducing conditions

## Result of activity analysis

Result of activity analysis

FDC-P1 cells were cultured with 0 to 250 ng/mL mouse Igf1. Cell proliferation was measured after 48 hours and the linear portion of the curve was used to calculate the ED50.

## Specification

Product Description	Mouse Igf1 (Q8CAR0) recombinant protein expressed in <i>Escherichia coli</i> .
Sequence	GPETLCGAELVDALQFVCGPRGFYFNKPTGYGSSIRRAPQTGMVECCFRSCDLRRLEMYCAPLK PTKAA
Host	<i>Escherichia coli</i>
Theoretical MW (kDa)	7.6
Form	Lyophilized
Preparation Method	<i>Escherichia coli</i> expression system
Endotoxin Level	< 0.1 EU/ug

Activity	The activity is determined by the dose-dependent proliferation of FDC-P1 cells. The expected ED <sub>50</sub> for this effect is 14-21 ng/mL.
Quality Control Testing	1 ug/lane in 4-20% Tris-Glycine gel Stained with Coomassie Blue Lane 1: non-reducing conditions Lane 2: reducing conditions
Storage Buffer	No additive
Storage Instruction	Store at -20°C on dry atmosphere. After reconstitution with sterilized water, store at -20°C. Aliquot to avoid repeated freezing and thawing.
Note	Result of activity analysis Result of activity analysis FDC-P1 cells were cultured with 0 to 250 ng/mL mouse Igf1. Cell proliferation was measured after 48 hours and the linear portion of the curve was used to calculate the ED50.

## Applications

- Functional Study
- SDS-PAGE

## Gene Info — Igf1

Entrez GeneID	<a href="#">16000</a>
Protein Accession#	<a href="#">Q8CAR0</a>
Gene Name	Igf1
Gene Alias	C730016P09Rik, Igf-1, Igf-I
Gene Description	insulin-like growth factor 1
Gene Ontology	<a href="#">Hyperlink</a>
Other Designations	somatomedin