

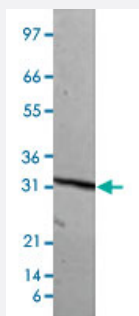
Bioactive

IL17F (Human) Recombinant Protein

Catalog # P4409

Size 25 ug

Applications



Non-reducing conditions

Result of activity analysis

Result of activity analysis

Serial dilutions of human IL17F (starting at 400 ng/mL) were added to NIH/3T3 cells. After 48 hours, production of mouse IL6 was measured and the linear portion of the curve was used to calculate the ED50.

Specification

Product Description	Human IL17F (Q96PD4) recombinant protein expressed in <i>Escherichia coli</i> .
Sequence	MRKIPKVGHTFFQKPESCPPVPGGSMKLDIGIINENQRVSMRNIESRSTSPWNYTVTWDPNRYPS SEVVQAQCRNLGCINAQGKEDISMNSVPIQQETLVVRRKHQGCVSFQLEKVLVTVGCTCVTPVI HHVQ
Host	<i>Escherichia coli</i>
Theoretical MW (kDa)	30
Form	Lyophilized
Preparation Method	<i>Escherichia coli</i> expression system

Endotoxin Level	< 0.1 EU/ug
Activity	The activity is determined by the dose-dependent production of IL-6 by mouse NIH 3T3 fibroblasts. The expected ED ₅₀ for this effect is 28-42 ng/mL.
Quality Control Testing	1 ug/lane in 4-20% Tris-Glycine gel Stained with Coomassie Blue Non-reducing conditions
Storage Buffer	Lyophilized from 10 mM sodium citrate, pH 3.0
Storage Instruction	Store at -20°C on dry atmosphere. After reconstitution with sterilized water, store at -20°C or lower. Aliquot to avoid repeated freezing and thawing.
Note	Result of activity analysis Result of activity analysis Serial dilutions of human IL17F (starting at 400 ng/mL) were added to NIH/3T3 cells. After 48 hours, production of mouse IL6 was measured and the linear portion of the curve was used to calculate the ED50.

Applications

- Functional Study
- SDS-PAGE

Gene Info — IL17F

Entrez GeneID	112744
Protein Accession#	Q96PD4
Gene Name	IL17F
Gene Alias	IL-17F, ML-1, ML1
Gene Description	interleukin 17F
Omim ID	606496
Gene Ontology	Hyperlink

Gene Summary

The protein encoded by this gene is a cytokine that shares sequence similarity with IL17. This cytokine is expressed by activated T cells, and has been shown to stimulate the production of several other cytokines, including IL6, IL8, and CSF2/GM-CSF. This cytokine is also found to inhibit the angiogenesis of endothelial cells and induce endothelial cells to produce IL2, TGFB1/TGFB, and monocyte chemoattractant protein-1. [provided by RefSeq]

Other Designations

cytokine ML-1

Disease

- [Arthritis](#)
- [Asthma](#)
- [Behcet Syndrome](#)
- [Cardiovascular Diseases](#)
- [Colitis](#)
- [Crohn Disease](#)
- [Dermatitis](#)
- [Diabetes Mellitus](#)
- [Dyspepsia](#)
- [Edema](#)
- [Fatigue Syndrome](#)
- [Genetic Predisposition to Disease](#)
- [Helicobacter Infections](#)
- [Inflammation](#)
- [Inflammatory Bowel Diseases](#)
- [Myocardial Infarction](#)
- [Psoriasis](#)
- [Pulmonary Disease](#)
- [Stomach Neoplasms](#)