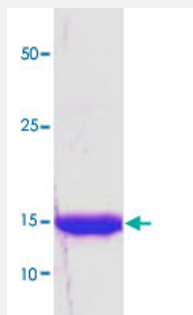


IPP (Human) Recombinant Protein

Catalog # P3517 Size 100 ug

Applications



Specification

Product Description	Human IPP (NP_005888, 1 a.a. - 157 a.a.) partial recombinant protein expressed in <i>Escherichia coli</i> .
Sequence	MANEDCPKAADSPFSSDKHAQLILAQINKMRNGQHFCDVQLQVGQESFKAHRLVLAASSPYFAA LFTGGMKESSKDVPILGIEAGIFQILLDFYTGIVNIGVNNVQELIAADMLQLTEVVHLCCEFLKGGID PLNCIGIFQFSEQIACHDLLEF
Host	Escherichia coli
Theoretical MW (kDa)	17.3
Form	Liquid
Preparation Method	<i>Escherichia coli</i> expression system
Purification	Conventional Chromatography
Concentration	1 mg/mL
Purity	> 95% by SDS-PAGE
Quality Control Testing	Loading 3 ug protein in 15% SDS-PAGE
Storage Buffer	In 10 mM HEPES, 25 mM NaCl, pH 7.4.

Storage Instruction

Store at 2°C to 8°C for 1 week. For long term storage, aliquot and store at -20°C to -80°C.
Aliquot to avoid repeated freezing and thawing.

Applications

- SDS-PAGE

Gene Info — IPP

Entrez GeneID	3652
Protein Accession#	NP_005888
Gene Name	IPP
Gene Alias	KLHL27
Gene Description	intracisternal A particle-promoted polypeptide
Omim ID	147485
Gene Ontology	Hyperlink
Gene Summary	The protein encoded by this gene is a member of the kelch family of proteins, which is characterized by a 50 amino acid repeat which interacts with actin. Transcript variants have been described but their full-length nature has not been determined. [provided by RefSeq]
Other Designations	OTTHUMP00000009696