

Bioactive

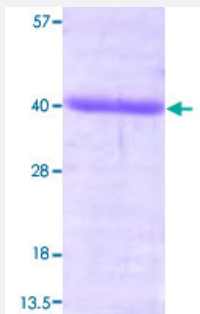
Full-Length

FKBP6 (Human) Recombinant Protein

Catalog # P3508

Size 50 ug

Applications



Specification

Product Description

Human FKBP6 (NP_003593, 1 a.a. - 327 a.a.) full-length recombinant protein with His tag expressed in *Escherichia coli*.

Sequence

MGSSHHHHHSSGLVPRGSHMGGSSALNQGVLGGDAPGQSLYERLSQRMLDISGDRGVLKDVI
REGAGDLVAPDASVLVKYSGYLEHMDRPFDSNYFRKTPRLMKLGEDITLWGMELGLLSMRRGEL
ARFLFKPNYAYGTLCPPPLIPNTTVLFEIELLDFLDCAESDKFCALSAEQDQFPLQKVLKVAAT
ERFNGNYLFRQNRFYDAKVRYKRALLLLRRRSAPPEEQHLVEAAKLPVLLNLSFTYLKLDRTIAL
CYGEQALIIDQKNAKALFRCGQACLLLTEYQKARDFLVRAQKEQPFNHDINNELKKLASCYRDYVD
KEKEMWHRMFAPCGDGSTAGES

Host

Escherichia coli

Theoretical MW (kDa)

39.3

Form

Liquid

Preparation Method

Escherichia coli expression system

Purification

Conventional Chromatography

Concentration

0.5 mg/mL

Purity

> 95% by SDS-PAGE

Activity	Specific activity is > 190 nmoles/min/ug, and is defined as the amount of enzyme that cleaves 1 umol of suc-AAFP-pNA per minute at 25°C in Tris-HCl pH 8.0 using chymotrypsin.
Quality Control Testing	Loading 3 ug protein in 15% SDS-PAGE
Storage Buffer	In 20 mM Tris-HCl buffer, 50 mM NaCl, 1 mM EDTA, pH 8.0 (1 mM DTT, 40% glycerol).
Storage Instruction	Store at 2°C to 8°C for 1 week. For long term storage, aliquot and store at -20°C to -80°C. Aliquot to avoid repeated freezing and thawing.

Applications

- Functional Study
- SDS-PAGE

Gene Info — FKBP6

Entrez GeneID	8468
Protein Accession#	NP_003593
Gene Name	FKBP6
Gene Alias	FKBP36, MGC87179, PPlase
Gene Description	FK506 binding protein 6, 36kDa
Omim ID	604839
Gene Ontology	Hyperlink
Gene Summary	The protein encoded by this gene is a member of the immunophilin protein family, which play a role in immunoregulation and basic cellular processes involving protein folding and trafficking. The protein may have cis-trans prolyl isomerase activity, and binds to clathrin heavy chain and heat shock protein 72. This gene is found to be deleted in Williams syndrome, and the orthologous gene in mouse is essential for fertility and homologous pairing in male meiosis. [provided by RefSeq]
Other Designations	FK506 binding protein 6 FK506 binding protein 6 (36kD) FK506-binding protein 6 (36kD) immunophilin FKBP36 peptidylprolyl cis-trans isomerase rotamase

Disease

- [Azoospermia](#)

- [Genetic Predisposition to Disease](#)
- [Infertility](#)
- [Oligospermia](#)