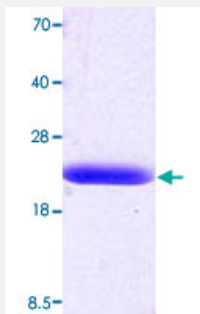


Bioactive

PPIB (Human) Recombinant Protein

Catalog # P3459 Size 100 ug

Applications



Specification

| | |
|----------------------|---|
| Product Description | Human PPIB (NP_000933, 26 a.a. - 216 a.a.) partial recombinant protein expressed in <i>Escherichia coli</i> . |
| Sequence | MLLPGPSAADEKKKGPKVTVKVYFDLRIGDEDVGRVIFGLFGKTVPKTVDNFVALATGEKGFYK NSKFHRVIKDFMIQGGDFTRGDGTGGKSIYGERFPDENFKLKHYGPWVSMANAGKDTNGSQFFI TTVKTAWLGDGKHVVFGKVLEGMEVVRKVESTKTDSRDKPLKDVIIADCGKIEVEKPFAIAKE |
| Host | <i>Escherichia coli</i> |
| Theoretical MW (kDa) | 21.2 |
| Form | Liquid |
| Preparation Method | <i>Escherichia coli</i> expression system |
| Purification | Conventional Chromatography |
| Concentration | 1 mg/mL |
| Purity | > 95% by SDS-PAGE |
| Endotoxin Level | < 1.0 EU per 1 microgram of protein (determined by LAL method) |

| | |
|-------------------------|---|
| Activity | Specific activity is > 220 nmoles/min/ug, and is defined as the amount of enzyme that cleaves 1umol of suc-AAFP-pNA per minute at 25°C in Tris-HCl pH 8.0 using chymotrypsin. |
| Quality Control Testing | Loading 3 ug protein in 15% SDS-PAGE |
| Storage Buffer | In 20 mM Tris, 20 mM NaCl, pH 8.0 (0.5 mM DTT, 10% glycerol). |
| Storage Instruction | Store at 2°C to 8°C for 1 week. For long term storage, aliquot and store at -20°C to -80°C. Aliquot to avoid repeated freezing and thawing. |

Applications

- Functional Study
- SDS-PAGE

Gene Info — PPIB

| | |
|--------------------|--|
| Entrez GeneID | 5479 |
| Protein Accession# | NP_000933 |
| Gene Name | PPIB |
| Gene Alias | CYP-S1, CYPB, MGC14109, MGC2224, SCYLP |
| Gene Description | peptidylprolyl isomerase B (cyclophilin B) |
| Omim ID | 123841 |
| Gene Ontology | Hyperlink |
| Gene Summary | The protein encoded by this gene is a cyclosporine-binding protein and is mainly located within the endoplasmic reticulum. It is associated with the secretory pathway and released in biological fluids. This protein can bind to cells derived from T- and B-lymphocytes, and may regulate cyclosporine A-mediated immunosuppression. [provided by RefSeq] |
| Other Designations | PPlase S-cyclophilin cyclophilin B cyclophilin-like protein peptidyl-prolyl cis-trans isomerase B peptidylprolyl isomerase B rotamase |

Disease

- [Disease Progression](#)

- [Disease Susceptibility](#)
- [HIV Infections](#)