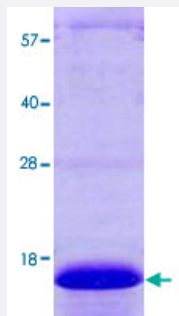


Full-Length

CDC26 (Human) Recombinant Protein

Catalog # P3442 Size 100 ug

Applications



Specification

Product Description	Human CDC26 (NP_644815, 1 a.a. - 85 a.a.) full-length recombinant protein with His tag expressed in <i>Escherichia coli</i> .
Sequence	MGSSHHHHHHSSGLVPRGSHMLRRKPTRLELKLDDIEEFENIRKDLETRKKQKEDVEVVGSDG EGAIGLSSDPKSREQMINDRIGYKPQPKPNRSSQFGSLEF
Host	<i>Escherichia coli</i>
Theoretical MW (kDa)	11.9
Form	Liquid
Preparation Method	<i>Escherichia coli</i> expression system
Purification	Conventional Chromatography
Concentration	1 mg/mL
Purity	> 90% by SDS-PAGE
Quality Control Testing	Loading 3 ug protein in 15% SDS-PAGE
Storage Buffer	In 20 mM Tris-HCl buffer, 0.1 M NaCl, pH 8.0 (40% glycerol).

Storage Instruction

Store at 2°C to 8°C for 1 week. For long term storage, aliquot and store at -20°C to -80°C.
Aliquot to avoid repeated freezing and thawing.

Applications

- SDS-PAGE

Gene Info — CDC26

Entrez GeneID [246184](#)

Protein Accession# [NP_644815](#)

Gene Name CDC26

Gene Alias C9orf17

Gene Description cell division cycle 26 homolog (S. cerevisiae)

Gene Ontology [Hyperlink](#)

Gene Summary The protein encoded by this gene is highly similar to *Saccharomyces cerevisiae* Cdc26, a component of cell cycle anaphase-promoting complex (APC). APC is composed of a group of highly conserved proteins and functions as a cell cycle-regulated ubiquitin-protein ligase. APC thus is responsible for the cell cycle regulated proteolysis of various proteins. [provided by RefSeq]

Other Designations CDC26 subunit of anaphase promoting complex|OTTHUMP00000021952

Pathway

- [Cell cycle](#)
- [Ubiquitin mediated proteolysis](#)