

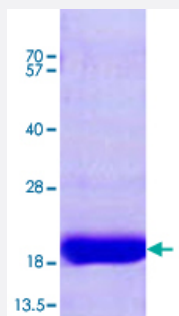
Full-Length

# MAP1LC3B2 (Human) Recombinant Protein

Catalog # P3434

Size 100 ug

## Applications



## Specification

<b>Product Description</b>	Human MAP1LC3B2 (NP_001078950, 1 a.a. - 120 a.a.) full-length recombinant protein with His tag expressed in <i>Escherichia coli</i> .
<b>Sequence</b>	MGSSHHHHHHSSGLVPRGSHMPSEKTFKQRRTFEQRVEDVRLIREQHPTKIPVIIERYKGEKQLPV LDKTKFLVPDHYNMSELIKIIRRLQLNANQAFFLLVNGHSMVSVSTPISEVYESEKDEDGFLY MVC ASQETFG
<b>Host</b>	<i>Escherichia coli</i>
<b>Theoretical MW (kDa)</b>	16.2
<b>Form</b>	Liquid
<b>Preparation Method</b>	<i>Escherichia coli</i> expression system
<b>Purification</b>	Conventional Chromatography
<b>Concentration</b>	1 mg/mL
<b>Purity</b>	> 95% by SDS-PAGE
<b>Quality Control Testing</b>	Loading 3 ug protein in 15% SDS-PAGE
<b>Storage Buffer</b>	In 20 mM Tris-HCl buffer, 0.1 M NaCl, pH 8.0 (1 mM DTT, 10% glycerol).

**Storage Instruction**

Store at 2°C to 8°C for 1 week. For long term storage, aliquot and store at -20°C to -80°C.  
Aliquot to avoid repeated freezing and thawing.

## Applications

- SDS-PAGE

## Gene Info — MAP1LC3B2

Entrez GeneID	<a href="#">643246</a>
Protein Accession#	<a href="#">NP_001078950</a>
Gene Name	MAP1LC3B2
Gene Alias	-
Gene Description	microtubule-associated protein 1 light chain 3 beta 2
Gene Ontology	<a href="#">Hyperlink</a>
Other Designations	Microtubule-associated proteins 1A/1B light chain 3B-like protein microtubule-associated protein 1 light chain 3 beta-like