

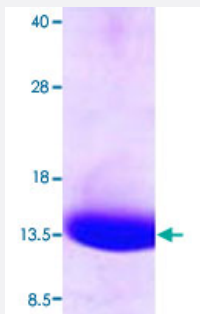
Full-Length

## DYNLT1 (Human) Recombinant Protein

Catalog # P3433

Size 100 ug

### Applications



### Specification

<b>Product Description</b>	Human DYNLT1 (NP_006510, 1 a.a. - 113 a.a.) full-length recombinant protein with His tag expressed in <i>Escherichia coli</i> .
<b>Sequence</b>	MGSSHHHHHHSSGLVPRGSHMEDYQAAEETAFVVDEVSNIVKEAIESAIGGNAYQHSKVNQWTT NVVEQTLSQLTKLGKPFKYVTCVIMQKNGAGLHTASSCFWDSSTDGSC TVRWENKTM YC VSAF GLSI
<b>Host</b>	<i>Escherichia coli</i>
<b>Theoretical MW (kDa)</b>	14.6
<b>Form</b>	Liquid
<b>Preparation Method</b>	<i>Escherichia coli</i> expression system
<b>Purification</b>	Conventional Chromatography
<b>Concentration</b>	1 mg/mL
<b>Purity</b>	> 95% by SDS-PAGE
<b>Quality Control Testing</b>	Loading 3 ug protein in 15% SDS-PAGE
<b>Storage Buffer</b>	In 20 mM Tris-HCl buffer, 0.1 M NaCl, pH 8.0 (1 mM DTT, 30% glycerol).

**Storage Instruction**

Store at 2°C to 8°C for 1 week. For long term storage, aliquot and store at -20°C to -80°C.  
Aliquot to avoid repeated freezing and thawing.

**Applications**

- SDS-PAGE

**Gene Info — DYNLT1**

Entrez GeneID	<a href="#">6993</a>
Protein Accession#	<a href="#">NP_006510</a>
Gene Name	DYNLT1
Gene Alias	CW-1, MGC111571, TCTEL1, tctex-1
Gene Description	dynein, light chain, Tctex-type 1
Omim ID	<a href="#">601554</a>
Gene Ontology	<a href="#">Hyperlink</a>
Gene Summary	Cytoplasmic dynein is the major motor protein complex responsible for minus-end, microtubule-based motile processes. Each dynein complex consists of 2 heavy chains that have ATPase and motor activities, plus a group of accessory polypeptides. TCTEX1 is a dynein light chain involved in cargo binding (Chuang et al., 2005 [PubMed 15992542]).[supplied by OMIM]
Other Designations	OTTHUMP00000017508 OTTHUMP00000040084 t-complex-associated-testis-expressed 1-like 1