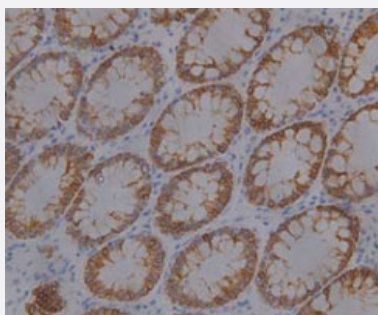


# KRT19 monoclonal antibody, clone 7

Catalog # MAB9972      Size 100 ug

## Applications



### Immunohistochemistry

Immunohistochemical staining of human colon carcinoma tissue section with KRT19 monoclonal antibody, clone 7 (Cat # MAB9972) at 1:1000 dilution.

## Specification

**Product Description** Mouse monoclonal antibody raised against full length recombinant KRT19.

**Immunogen** Recombinant protein corresponding to full length human KRT19.

**Host** Mouse

**Reactivity** Human

**Form** Liquid

**Purification** Affinity purification

**Isotype** IgG1

**Recommend Usage** Immunohistochemistry (1:1000)  
The optimal working dilution should be determined by the end user.

**Storage Buffer** In Citrate-Tris-HCl buffer, pH 7.0 (0.02% Proclin 300)

**Storage Instruction** Store at 4°C. For long term storage store at -20°C.  
Aliquot to avoid repeated freezing and thawing.

## Applications

- Immunohistochemistry

Immunohistochemical staining of human colon carcinoma tissue section with KRT19 monoclonal antibody, clone 7 (Cat # MAB9972) at 1:1000 dilution.

- Enzyme-linked Immunoabsorbent Assay

## Gene Info — KRT19

**Entrez GeneID** [3880](#)

**Protein Accession#** [P08727](#)

**Gene Name** KRT19

**Gene Alias** CK19, K19, K1CS, MGC15366

**Gene Description** keratin 19

**Omim ID** [148020](#)

**Gene Ontology** [Hyperlink](#)

**Gene Summary** The protein encoded by this gene is a member of the keratin family. The keratins are intermediate filament proteins responsible for the structural integrity of epithelial cells and are subdivided into cytokeratins and hair keratins. The type I cytokeratins consist of acidic proteins which are arranged in pairs of heterotypic keratin chains. Unlike its related family members, this smallest known acidic cytokeratin is not paired with a basic cytokeratin in epithelial cells. It is specifically expressed in the periderm, the transiently superficial layer that envelopes the developing epidermis. The type I cytokeratins are clustered in a region of chromosome 17q12-q21. [provided by RefSeq]

**Other Designations** 40-kDa keratin intermediate filament|cytokeratin 19|keratin, type I cytoskeletal 19|keratin, type I, 40-kd

## Disease

- [Liver Cirrhosis](#)