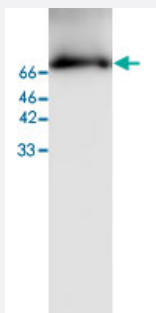


MSN monoclonal antibody, clone 30

Catalog # MAB9965

Size 100 ug

Applications



Western Blot (Cell lysate)

Western blot analysis of HeLa whole cell lysate with MSN monoclonal antibody, clone 30 (Cat # MAB9965) at 1:500 dilution.

Specification

Product Description Mouse monoclonal antibody raised against full length recombinant MSN.

Immunogen Recombinant protein corresponding to full length human MSN.

Host Mouse

Reactivity Human

Specificity It can expression in HeLa whole cell lysate.

Form Liquid

Purification Affinity purification

Isotype IgG1

Recommend Usage Western blot (1:500)
The optimal working dilution should be determined by the end user.

Storage Buffer In Citrate-Tris-HCl buffer, pH 7.0 (0.02% Proclin 300)

Storage Instruction Store at 4°C. For long term storage store at -20°C.
Aliquot to avoid repeated freezing and thawing.

Applications

- Western Blot (Cell lysate)

Western blot analysis of HeLa whole cell lysate with MSN monoclonal antibody, clone 30 (Cat # MAB9965) at 1:500 dilution.

- Enzyme-linked Immunoabsorbent Assay

Gene Info — MSN

Entrez GeneID	4478
Gene Name	MSN
Gene Alias	-
Gene Description	moesin
Omim ID	309845
Gene Ontology	Hyperlink
Gene Summary	Moesin (for membrane-organizing extension spike protein) is a member of the ERM family which includes ezrin and radixin. ERM proteins appear to function as cross-linkers between plasma membranes and actin-based cytoskeletons. Moesin is localized to filopodia and other membranous protrusions that are important for cell-cell recognition and signaling and for cell movement. [provided by RefSeq]
Other Designations	OTTHUMP00000023438

Pathway

- [Leukocyte transendothelial migration](#)
- [Regulation of actin cytoskeleton](#)