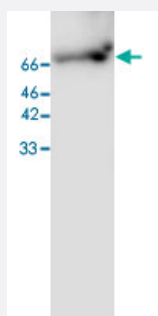


# MSN monoclonal antibody, clone 25

Catalog # MAB9964

Size 100 ug

## Applications



### Western Blot (Cell lysate)

Western blot analysis of HeLa whole cell lysate with MSN monoclonal antibody, clone 25 (Cat # MAB9964) at 1:500 dilution.

## Specification

**Product Description** Mouse monoclonal antibody raised against full length recombinant MSN.

**Immunogen** Recombinant protein corresponding to full length human MSN.

**Host** Mouse

**Reactivity** Human

**Specificity** It can expression in HeLa whole cell lysate.

**Form** Liquid

**Purification** Affinity purification

**Isotype** IgG1

**Recommend Usage** Western blot (1:500)  
The optimal working dilution should be determined by the end user.

**Storage Buffer** In Citrate-Tris-HCl buffer, pH 7.0 (0.02% Proclin 300)

**Storage Instruction** Store at 4°C. For long term storage store at -20°C.  
Aliquot to avoid repeated freezing and thawing.

## Applications

- Western Blot (Cell lysate)

Western blot analysis of HeLa whole cell lysate with MSN monoclonal antibody, clone 25 (Cat # MAB9964) at 1:500 dilution.

- Enzyme-linked Immunoabsorbent Assay

## Gene Info — MSN

Entrez GeneID	<a href="#">4478</a>
---------------	----------------------

Gene Name	MSN
-----------	-----

Gene Alias	-
------------	---

Gene Description	moesin
------------------	--------

Omim ID	<a href="#">309845</a>
---------	------------------------

Gene Ontology	<a href="#">Hyperlink</a>
---------------	---------------------------

Gene Summary	Moesin (for membrane-organizing extension spike protein) is a member of the ERM family which includes ezrin and radixin. ERM proteins appear to function as cross-linkers between plasma membranes and actin-based cytoskeletons. Moesin is localized to filopodia and other membranous protrusions that are important for cell-cell recognition and signaling and for cell movement. [provided by RefSeq]
--------------	--

Other Designations	OTTHUMP00000023438
--------------------	--------------------

## Pathway

- [Leukocyte transendothelial migration](#)
- [Regulation of actin cytoskeleton](#)