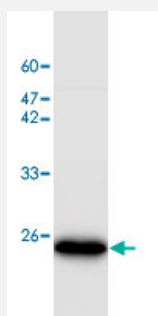


# PEBP1 monoclonal antibody, clone 21

Catalog # MAB9940

Size 100 ug

## Applications



### Western Blot (Cell lysate)

Western blot analysis of SW480 whole cell lysate with PEBP1 monoclonal antibody, clone 21 (Cat # MAB9940) at 1:1000 dilution.

## Specification

**Product Description** Mouse monoclonal antibody raised against full length recombinant PEBP1.

**Immunogen** Recombinant protein corresponding to full length human PEBP1.

**Host** Mouse

**Reactivity** Human

**Specificity** It can expression in SW480 whole cell lysate.

**Form** Liquid

**Purification** Affinity purification

**Isotype** IgG2a

**Recommend Usage** Western blot (1:1000)  
The optimal working dilution should be determined by the end user.

**Storage Buffer** In Citrate-Tris-HCl buffer, pH 7.0 (0.02% Proclin 300)

**Storage Instruction** Store at 4°C. For long term storage store at -20°C.  
Aliquot to avoid repeated freezing and thawing.

## Applications

- Western Blot (Cell lysate)

Western blot analysis of SW480 whole cell lysate with PEBP1 monoclonal antibody, clone 21 (Cat # MAB9940) at 1:1000 dilution.

- Enzyme-linked Immunoabsorbent Assay

## Gene Info — PEBP1

Entrez GeneID	<a href="#">5037</a>
---------------	----------------------

GeneBank Accession#	<a href="#">NM_002567.2</a>
---------------------	-----------------------------

Protein Accession#	<a href="#">NP_002558.1</a>
--------------------	-----------------------------

Gene Name	PEBP1
-----------	-------

Gene Alias	HCNP, PBP, PEBP, RKIP
------------	-----------------------

Gene Description	phosphatidylethanolamine binding protein 1
------------------	--------------------------------------------

Omim ID	<a href="#">604591</a>
---------	------------------------

Gene Ontology	<a href="#">Hyperlink</a>
---------------	---------------------------

Other Designations	Raf kinase inhibitory protein prostatic binding protein
--------------------	---------------------------------------------------------