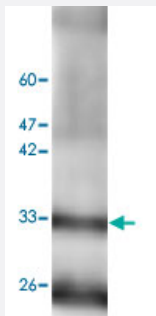


# RGN monoclonal antibody, clone 17

Catalog # MAB9927      Size 100 ug

## Applications



### Western Blot (Tissue lysate)

Western blot analysis of mouse liver lysate with RGN monoclonal antibody, clone 17 (Cat # MAB9927) at 1:1000 dilution.

## Specification

**Product Description** Mouse monoclonal antibody raised against full length recombinant RGN.

**Immunogen** Recombinant protein corresponding to full length human RGN.

**Host** Mouse

**Reactivity** Human

**Specificity** It can expression in mouse liver whole cell lysate.

**Form** Liquid

**Purification** Affinity purification

**Isotype** IgG2a

**Recommend Usage** Western blot (1:1000)  
The optimal working dilution should be determined by the end user.

**Storage Buffer** In Citrate-Tris-HCl buffer, pH 7.0 (0.02% Proclin 300)

**Storage Instruction** Store at 4°C. For long term storage store at -20°C.  
Aliquot to avoid repeated freezing and thawing.

## Applications

- Western Blot (Tissue lysate)

Western blot analysis of mouse liver lysate with RGN monoclonal antibody, clone 17 (Cat # MAB9927) at 1:1000 dilution.

- Western Blot (Cell lysate)

- Enzyme-linked Immunoabsorbent Assay

## Gene Info — RGN

Entrez GeneID [9104](#)

GeneBank Accession# [NM\\_152869.2](#)

Protein Accession# [NP\\_690608.1](#)

Gene Name RGN

Gene Alias RC, SMP30

Gene Description regucalcin (senescence marker protein-30)

Omim ID [300212](#)

Gene Ontology [Hyperlink](#)

**Gene Summary** The protein encoded by this gene is a highly conserved, calcium-binding protein, that is preferentially expressed in the liver and kidney. It may have an important role in calcium homeostasis. Studies in rat indicate that this protein may also play a role in aging, as it shows age-associated down-regulation. This gene is part of a gene cluster on chromosome Xp11.3-Xp11.23. Alternative splicing results in two transcript variants having different 5' UTRs, but encoding the same protein. [provided by RefSeq]

**Other Designations** OTTHUMP00000023195|OTTHUMP00000023196|regucalcin|senescence marker protein-30