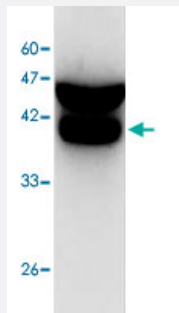


CDC42 monoclonal antibody, clone 1

Catalog # MAB9926

Size 100 ug

Applications



Western Blot (Cell lysate)

Western blot analysis of SW480 whole cell lysate with CDC42 monoclonal antibody, clone 1 (Cat # MAB9926) at 1:1000 dilution.

Specification

Product Description Mouse monoclonal antibody raised against full length recombinant CDC42.

Immunogen Recombinant protein corresponding to full length human CDC42.

Host Mouse

Reactivity Human

Specificity It can expression in SW480 whole cell lysate.

Form Liquid

Purification Affinity purification

Isotype IgG2b

Recommend Usage Western blot (1:1000)
The optimal working dilution should be determined by the end user.

Storage Buffer In Citrate-Tris-HCl buffer, pH 7.0 (0.02% Proclin 300)

Storage Instruction Store at 4°C. For long term storage store at -20°C.
Aliquot to avoid repeated freezing and thawing.

Applications

- Western Blot (Cell lysate)

Western blot analysis of SW480 whole cell lysate with CDC42 monoclonal antibody, clone 1 (Cat # MAB9926) at 1:1000 dilution.

- Enzyme-linked Immunoabsorbent Assay

Gene Info — CDC42

Entrez GeneID [998](#)

GeneBank Accession# [NM_044472.2](#)

Protein Accession# [NP_426359.1](#)

Gene Name CDC42

Gene Alias CDC42Hs, G25K

Gene Description cell division cycle 42 (GTP binding protein, 25kDa)

Omim ID [116952](#)

Gene Ontology [Hyperlink](#)

Gene Summary The protein encoded by this gene is a small GTPase of the Rho-subfamily, which regulates signaling pathways that control diverse cellular functions including cell morphology, migration, endocytosis and cell cycle progression. This protein is highly similar to *Saccharomyces cerevisiae* Cdc 42, and is able to complement the yeast *cdc42-1* mutant. The product of oncogene *Dbl* was reported to specifically catalyze the dissociation of GDP from this protein. This protein could regulate actin polymerization through its direct binding to Neural Wiskott-Aldrich syndrome protein (N-WASP), which subsequently activates Arp2/3 complex. Alternative splicing of this gene results in multiple transcript variants. [provided by RefSeq]

Other Designations GTP-binding protein, 25kD|OTTHUMP00000002834|OTTHUMP00000002926|cell division cycle 42|cell division cycle 42 (GTP binding protein, 25kD)|cell division cycle 42 (GTP-binding protein, 25kD)|dJ224A6.1.1 (cell division cycle 42 (GTP-binding protein, 25kD))|d

Pathway

- [Adherens junction](#)

- [Axon guidance](#)
- [Chemokine signaling pathway](#)
- [Endocytosis](#)
- [Epithelial cell signaling in Helicobacter pylori infection](#)
- [Fc gamma R-mediated phagocytosis](#)
- [Focal adhesion](#)
- [GnRH signaling pathway](#)
- [Leukocyte transendothelial migration](#)
- [MAPK signaling pathway](#)
- [Neurotrophin signaling pathway](#)
- [Pancreatic cancer](#)
- [Pathogenic Escherichia coli infection - EHEC](#)
- [Pathways in cancer](#)
- [Regulation of actin cytoskeleton](#)
- [Renal cell carcinoma](#)
- [T cell receptor signaling pathway](#)
- [Tight junction](#)
- [VEGF signaling pathway](#)

Disease

- [Genetic Predisposition to Disease](#)
- [Hepatitis B](#)
- [HIV Infections](#)
- [Multiple Sclerosis](#)
- [Parkinson disease](#)