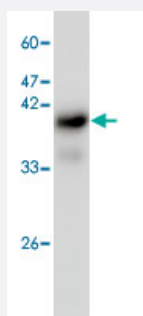


# IST1 monoclonal antibody, clone 22

Catalog # MAB9917

Size 100 ug

## Applications



### Western Blot (Cell lysate)

Western blot analysis of H520 whole cell lysate with IST1 monoclonal antibody, clone 22 (Cat # MAB9917) at 1:1000 dilution.

## Specification

**Product Description** Mouse monoclonal antibody raised against full length recombinant IST1.

**Immunogen** Recombinant protein corresponding to full length human IST1.

**Host** Mouse

**Reactivity** Human

**Specificity** It can expression in H520 whole cell lysate.

**Form** Liquid

**Purification** Affinity purification

**Isotype** IgG1

**Recommend Usage** Western blot (1:1000)  
The optimal working dilution should be determined by the end user.

**Storage Buffer** In Citrate-Tris-HCl buffer, pH 7.0 (0.02% Proclin 300)

**Storage Instruction** Store at 4°C. For long term storage store at -20°C.  
Aliquot to avoid repeated freezing and thawing.

## Applications

- Western Blot (Cell lysate)

Western blot analysis of H520 whole cell lysate with IST1 monoclonal antibody, clone 22 (Cat # MAB9917) at 1:1000 dilution.

- Enzyme-linked Immunoabsorbent Assay

## Gene Info — IST1

|               |                      |
|---------------|----------------------|
| Entrez GeneID | <a href="#">9798</a> |
|---------------|----------------------|

|                     |                             |
|---------------------|-----------------------------|
| GeneBank Accession# | <a href="#">NM_014761.2</a> |
|---------------------|-----------------------------|

|                    |                             |
|--------------------|-----------------------------|
| Protein Accession# | <a href="#">NP_055576.2</a> |
|--------------------|-----------------------------|

|           |      |
|-----------|------|
| Gene Name | IST1 |
|-----------|------|

|            |      |
|------------|------|
| Gene Alias | OLC1 |
|------------|------|

|                  |  |
|------------------|--|
| Gene Description | increased sodium tolerance 1 homolog (yeast) |
|------------------|--|

|               |                           |
|---------------|---------------------------|
| Gene Ontology | <a href="#">Hyperlink</a> |
|---------------|---------------------------|

|                    |   |
|--------------------|---|
| Other Designations | IST1 homolog; overexpressed in lung cancer 1; putative MAPK-activating protein PM28 |
|--------------------|---|