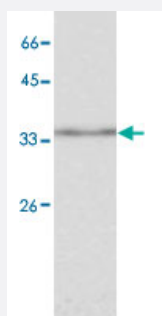


CAPZA1 monoclonal antibody, clone 45

Catalog # MAB9912

Size 100 ug

Applications



Western Blot (Cell lysate)

Western blot analysis of HeLa whole cell lysate with CAPZA1 monoclonal antibody, clone 45 (Cat # MAB9912) at 1:1000 dilution.

Specification

Product Description Mouse monoclonal antibody raised against full length recombinant CAPZA1.

Immunogen Recombinant protein corresponding to full length human CAPZA1.

Host Mouse

Reactivity Human

Specificity It can expression in HeLa whole cell lysate.

Form Liquid

Purification Affinity purification

Isotype IgG1

Recommend Usage Western blot (1:1000)
The optimal working dilution should be determined by the end user.

Storage Buffer In Citrate-Tris-HCl buffer, pH 7.0 (0.02% Proclin 300)

Storage Instruction Store at 4°C. For long term storage store at -20°C.
Aliquot to avoid repeated freezing and thawing.

Applications

- Western Blot (Cell lysate)

Western blot analysis of HeLa whole cell lysate with CAPZA1 monoclonal antibody, clone 45 (Cat # MAB9912) at 1:1000 dilution.

- Enzyme-linked Immunoabsorbent Assay

Gene Info — CAPZA1

Entrez GeneID	829
---------------	---------------------

GeneBank Accession#	NM_006135.2
---------------------	-----------------------------

Protein Accession#	NP_006126.1
--------------------	-----------------------------

Gene Name	CAPZA1
-----------	--------

Gene Alias	CAPPA1, CAPZ, CAZ1
------------	--------------------

Gene Description	capping protein (actin filament) muscle Z-line, alpha 1
------------------	---

Omim ID	601580
---------	------------------------

Gene Ontology	Hyperlink
---------------	---------------------------

Gene Summary	CAPZA1 is a member of the F-actin capping protein alpha subunit family. This gene encodes the alpha subunit of the barbed-end actin binding protein. The protein regulates growth of the actin filament by capping the barbed end of growing actin filaments. [provided by RefSeq]
--------------	--

Other Designations	Cap Z[F-actin capping protein alpha-1 subunit OTTHUMP00000013512]
--------------------	---